



---

---

## *For Your Information*

- Food & drink may be carried anywhere in the building except the Coral Reef area.
- Smoking is only permitted in the Harbor View Room - Level 4.
- Photography is permitted.
- Restrooms are located on the Lobby Level & Level 4.
- The Rain Forest Exhibit is not open at night to allow the animals a normal day-night cycle.
- The Habitat Theater is in operation - Level 3.
- The Aquarium closes at 11 p.m.



---

---

## *Program*

7:00 p.m.	Hors D'Oeuvres & Bar	Lobby Level
7:30 p.m.	Hors D'Oeuvres & Bar	Level 3
8:00 p.m.	Buffet & Bar	Level 4
9:30 p.m.	Dessert & Coffee	Lobby Level
9:30 p.m.	Diver Feeds The Fish - Coral Reef	Level 3
10:00 p.m.	Diver Feeds The Fish - Coral Reef	Level 3

*Have A Great Evening*

---

---

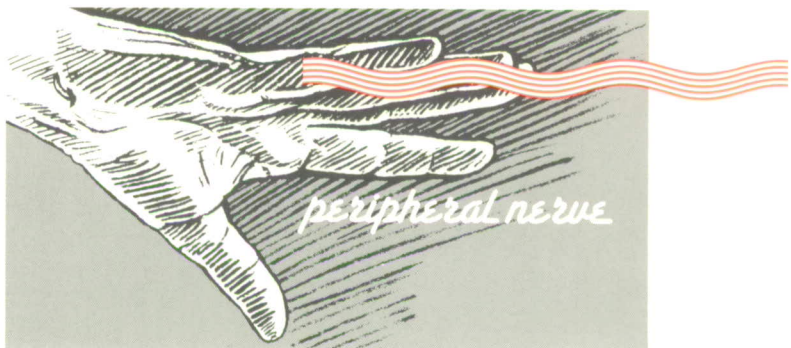
American Association of Neurological Surgeons  
Congress of Neurological Surgeons



**NEUROLOGICAL**



**SURGERY**



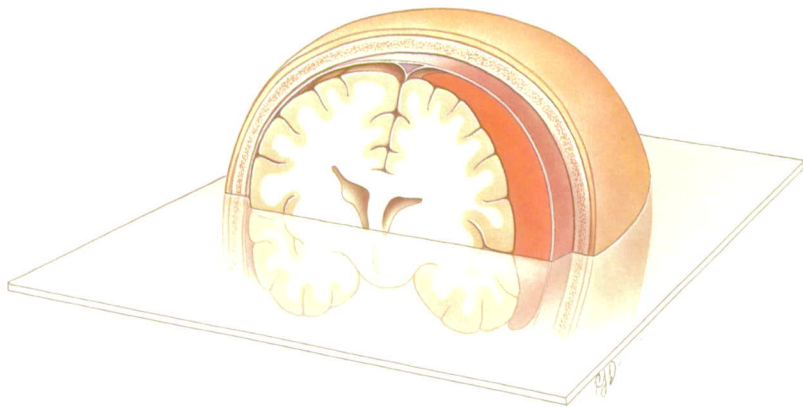
Neurosurgery is the medical specialty that provides medical and surgical care to patients with disorders of the brain, spinal cord, and nerves. Neurosurgeons treat a diversity of conditions affecting the body since diseases of other organs can have their most serious consequences on the brain and other parts of the nervous system.

## NEUROSURGICAL TREATMENT

The following pages describe some of the disorders of the central and peripheral nervous systems that are treated by neurosurgeons by either operative or non-operative methods or both. These are only examples, since neurological surgeons manage a much wider range of conditions than are described here.

### Trauma

Accidents often result in injury to the skull, brain, spinal cord, bones of the spine, or nerves. Head and spine injuries are the most common cause of death in individuals under the age of 35, and more than 100,000 people suffer nonfatal *injury to the brain* each year. Neurosurgical care aims to



**Figure 1A.** Diagrammatic representation of a large blood clot compressing the brain. The transparent sheet represents the plane shown in the computed tomographic (CT) scan in Figure 1B.