

*John M. Thompson*



THE CONGRESS of NEUROLOGICAL SURGEONS, inc.

Program of Eighth Annual Meeting

OCTOBER 29, 30, 31 AND NOVEMBER 1, 1958

ST. FRANCIS HOTEL - SAN FRANCISCO, CALIFORNIA



Dr Barnstijn San Bernardino

JOHN W. THOMPSON, M. D.  
1060-7th Avenue North  
St. Petersburg, Florida 33705

I would like to submit the following question to the Panel  
Discussion on Saturday morning, November First

---

Please return this card to one of the program committee

I would like to submit the following question to the Panel  
Discussion on Saturday morning, November First

---

Please return this card to one of the program committee

# Cervical Discography.

T3c syringe

21 needle - 10 cm.

70% diiodoast - Waco vial

Normal disc - hard.

Supine position - Hypocent. neck. ~~to~~

20° Turn or rotation T. opposite side.

96 mg luminal + 1 mg morphine.

Final thyroid cont. inject previous

superficial layer neck - Palpate

cont. laby. 30° walk up to C5-C6

1 cm further some C6-C7.

Scout film - AP & 2 lat. films

1 mg  $\frac{1}{2}$  T. 1 mg  $\frac{1}{2}$  TDC syringe.

Reposition - normal. usually passes

nicely into disc space. If disc is

hard the inj will reproduce the

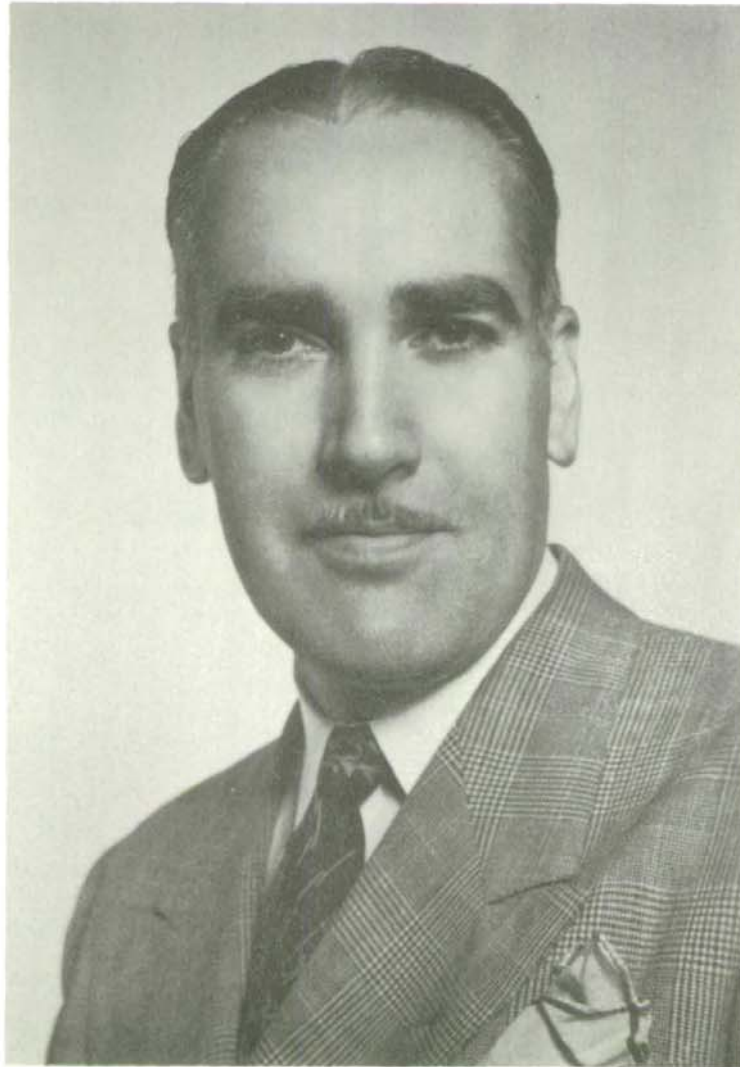
syndrome - arm pain, neck pain

absent in this.

---

Lateral position

## *Honored Guest — 1958*



**DR. EARL WALKER**

Professor of Neurological Surgery  
The Johns Hopkins University  
Baltimore, Maryland

### *Honored Guests*

- 1952 PROFESSOR HERBERT OLIVECRONA
- 1953 SIR GEOFFREY JEFFERSON
- 1954 DR. KENNETH McKENZIE
- 1955 DR. CARL RAND
- 1956 DR. WILDER PENFIELD
- 1957 DR. FRANCIS GRANT

# THE CONGRESS OF NEUROLOGICAL SURGEONS

## Officers

|                       |                     |
|-----------------------|---------------------|
| Raymond K. Thompson   | President           |
| Philip D. Gordy       | Vice President      |
| Richard L. DeSaussure | Secretary-Treasurer |

## Executive Committee

|                       |                |      |
|-----------------------|----------------|------|
| Frederick C. Rehfeldt | Past President |      |
| Robert D. Weyand      | 1955           | 1958 |
| Thomas M. Marshall    | 1955           | 1958 |
| Irwin Perlmutter      | 1956           | 1959 |
| John R. Williams      | 1956           | 1959 |
| Edward C. Weiford     | 1957           | 1960 |
| John R. Russell       | 1957           | 1960 |

1959 MEETING  
MIAMI, FLORIDA  
AMERICANA HOTEL  
OCTOBER 28-31, 1959

## COMMITTEES

### ARRANGEMENTS COMMITTEE

Robert Weyand, Chairman  
Jack Barrett  
Kenneth Cummings  
David Freeman  
Louis Gogela  
Samuel Hanzel  
Philip Van Horn

### AUXILIARY COMMITTEE

William Hegarty, Chairman  
Lisa Gordy  
Myrtle Tyrer  
Roy Tyrer

### BY-LAWS COMMITTEE

Gerald Winokur, Chairman  
Rembrandt Dunsmore  
Frederick Murtagh  
Henry Suckle  
J. Hugh Webb

### EDITORIAL COMMITTEE

Robert Fisher, Chairman  
Lee Christoferson  
Robert Green  
William Mosberg

### EXHIBITS COMMITTEE

John Kendrick, Chairman  
Charles Carton  
James Johnson  
Fleming Jolley  
Robert Jones  
Achilles Lisle  
John Pace  
Jack Siefert  
Harry Steelman

### FINANCE COMMITTEE

Francis O'Brien, Chairman  
Walter Boehm  
Faris Kimbell  
Gerald Winokur

### HOST COMMITTEE

A. Roy Tyrer, Chairman  
Warren Clary  
John Hetherington  
William Hunt  
Daniel Meub  
Harry Mount  
Mrs. M. P. Sayers (Marjorie)

### MEMBERSHIP COMMITTEE

Courtland Davis, Chairman  
Donald Bickers  
Byron Bloor  
Jack Cooper  
Lycurgus Davey  
James Golden  
Harry Steelman

### NOMINATING COMMITTEE

✓ Martin P. Sayers, Chairman  
Walter Boehm  
Courtland Davis  
Murl Kinal  
Howard McAlhany  
John Williams

### POST CONVENTION TOUR COMMITTEE

Bernard Shuer, Chairman  
Jackson Mense  
Walter Scheuerman

### PROGRAM COMMITTEE

✓ Martin P. Sayers, Chairman  
Orlando Andy  
George Austin  
Franklin Earnest  
Robert McLaurin  
Pomeroy Nichols  
John Williams

### PUBLIC RELATIONS COMMITTEE

William Hegarty, Chairman  
Edward Bishop

Joseph Cluff  
Glen Cross  
Christian Keedy  
Edmund Smolik  
H. Jack Siefert

#### **REGISTRATION COMMITTEE**

Murl Kinal, Chairman  
Luther Martin  
James McFadden  
Gordon van den Noort

#### **SCIENTIFIC AND EDUCATION COMMITTEE**

George Manning, Jr., Chm.  
Richard Brzustowicz  
William Evans  
Nathaniel Hollister  
William Hunt  
Frederick Rehfeldt  
Charles Wilson

#### **STEERING COMMITTEE**

Edward Weiford, Chairman  
William Hegarty  
John Kendrick  
Mural Kinal  
A. Roy Tyrer  
Robert Weyand

#### **SURVEY COMMITTEE**

John Russell, Chairman  
Charles Baran  
Ralph Dawson  
Samuel Hanzel  
Edward Kloos  
Homer McClintock  
Joseph Ransohoff  
Averill Stowell  
William Tice

## WOMEN'S AUXILIARY ACTIVITIES

|                             |                                    |
|-----------------------------|------------------------------------|
| President .....             | Mrs. Roy (Myrtle) Tyrer            |
| Vice President .....        | Mrs. Philip (Lisa) Gordy           |
| Secretary-Treasurer .....   | Mrs. Richard (Phyllis) de Saussure |
| Arrangements Chairman ..... | Mrs. Robert (Camille) Weyand       |

### PROGRAM

#### Wednesday, October 29

6:30 p.m. Cocktails — Italian Room — St. Francis Hotel

#### Thursday, October 30

10:00 a.m. Coffee — Borgia Room

10:45 a.m. Business Meeting — Borgia Room

12:15 p.m. Departure from Fisherman's Wharf for Bay Boat trip.  
(Group cab arrangements will be made from hotel  
to Fisherman's Wharf)

1:30 p.m. Dockage at Sausalito for luncheon at Ondine's

3:30 p.m. Return arrival at Fisherman's Wharf

6:30 p.m. Cocktails — Mural Room

7:30 p.m. Dinner Dance — Mural Room  
Dress optional but please, ladies and gentlemen,  
wear name tags!

#### Friday, October 31

Free afternoon and evening to be shared with husbands!



-NOTES-

Milbury Union Cafeteria

Dr Bickford - ? Mayo Clinic

Technique - essential. Reliable instrument approx  
25000 yr channel. can get by in 2. but  
the more the easier should be 8. Established instrument  
are reliable. In many N.S. patients diagnosis  
apparent on first page. In neurological cases  
(epilepsy) long records may be necessary.

N.S. interested in ~~fast~~ focus. DIT focus  
most important to N.S. Technician very  
important. MUST be trained for at least 6  
months. Observation + technique long interpretation important.  
Fellowship - some learn in 3 months - some take  
1 yr. Now there is a Board of EEG.

17 Training requires many different types.  
Dr Bickford uses collodion electrodes.

Type T looks best. conductive material.

Bipolar runs most important to N.S.

Slow wave focus show up best. Mirror image  
waves - increases the amplitude.

Try a number of different runs.



Sleep and wake recordings. For N.S.

Wake recordings are most important.

Slow focus may be suppressed

Technical difficulties - eye movements. - A (charge)  
battery. Produces waves which may be confused  
with slow waves. Study what normal eye movements  
look like - Eyes closed. Technician must look.

Electrode trouble may simulate slow wave focus.  
Technician must be observant. Make the EEG. Tech.

make a diagnosis then she must evaluate.

occurrence of drowsiness in the wake record.

Drowsiness changes record in generalised fashion.

Cover Test - bring left eye 4th - left eye down  
 look as far to rt  
 3rd N. Affected eye down & out.  
 POST GRADUATE DAY

Wednesday, October 29

Dull head phenomenon - vertical

Toland Auditorium - University of California Medical Center

Internal N. oph. thal

TRANSPORTATION - Gray Line Buses will leave Powell Street entrance of St. Francis Hotel at 8:15 - 8:30 a.m. and at 12:30 p.m. Buses will return from University of California Medical Center at 12:05 p.m. and 4:15 p.m.

7:30 a.m. - 9:00 p.m. Registration Desk Open  
 Powell Street Mezzanine

9:00 a.m. Electroencephalography for Neurosurgeons ..... Reginald G. Bickford

10:30 a.m. Coffee break

10:45 a.m. Electroencephalography (cont'd) ..... Reginald G. Bickford

12:00 p.m. LUNCHEON

Scientific Movies. Elective  
 Toland Auditorium  
 (1) Chronic progressive external ophthalmoplegia & myopathy - may have almost complete paralysis  
 (2) Down-lid retractor muscle - showed partial recovery.  
 Hereditary

1:20 p.m. Case of Inversion of Body Scheme with Right-Left Disorientation in a Left-Handed - vascular disturbance of hemisphere Patient ..... Robert Knighton and Arthur Eisenbrey

1:45 p.m. Electrolytic Rostral Reticular Lesions in the Cat Bilateral - complete Unilateral ..... John Adametz

2:10 p.m. Unusual Neurological Extra-Ocular Motor Anomalies Superior-colliculus level ..... Thomas Kearns

Nystagmus  
 The more

2:35 p.m. The Technique of Cervical Discography ... George Smith and Pomeroy Nichols

3:00 p.m. Lumbar Disc Surgery in the Lateral Recumbent Position ..... Bland Cannon

3:25 p.m. Removal of Left Frontal Meningioma ..... Alexander Johnson

3:50 p.m. Intracranial Arterial Aneurysms; Surgical Management ..... Dwight Parkinson

6:30 p.m. Cocktails - Italian Room - St. Francis Hotel

-NOTES-

Age important - slide

Newborn 

1 

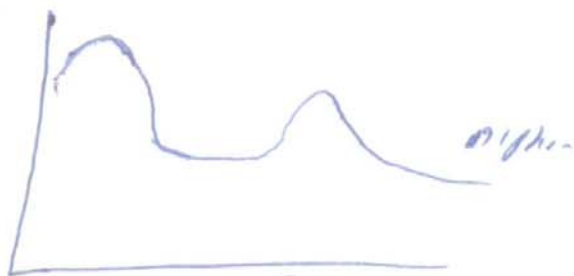
Adult 

Slow waves in young life. Thus d.L.T. focus more difficult in children.

Technique - generally tried to show occipital focus.

waited out for old age. 60 and over.

Allow for some abnormality? as T. whether slow wave focus may be normal after 60.



10<sup>10</sup> Jan 1929  
 Try to classify records. Technician must make diagnosis. Examination of Nervous System - book (small) not out by my clinic. \*Grade 1 focal\*. Supervisor makes diagnosis. Interpret the diagnosis the records & diagnosis. Dr. Bickford has a little literature about this what he will send on request.

- (1) Dyschytoria sudden slide - decade
- (2) Delta Surgeon major death

Disruptive synd

Normal people - 84% normal. Some dysrhythmia 1 or 2.  
 Dysrhythmia 1 or focal was abnormal. Dys. 1 or 2 generalized not necessarily abnormal.

## SCIENTIFIC PROGRAM

Thursday, October 30

Colonial Room — St. Francis Hotel

PLEASE WEAR NAME TAGS  
FOR ADMISSION IDENTIFICATION

Reserve questions for  
Saturday, 10:45 a.m., Panel Discussion

- 8:30 - 9:30 a.m. Registration
- 9:30 a.m. Business Meeting
- 10:00 a.m. Anatomico Physiological Orientation to  
the Brain Stem ..... J. Douglas French
- 10:30 a.m. Coffee Break
- 10:45 a.m. Vascular Anatomy and Syndromes of the  
Brain Stem ..... Harry A. Kaplan
- 11:15 a.m. Introduction of Honored Guest  
A Survey of Surgery in and about the  
Brain Stem ..... Earl Walker
- 12:15 p.m. Luncheon — Italian Banquet Room
- 1:30 p.m. Surgical Technique in the  
Posterior Fossa ..... Wallace B. Hamby
- 2:00 p.m. The Mechanism of Syringomyelia and its Surgical  
Correction ..... W. James Gardner
- 2:30 p.m. Contrast Roentgenological Diagnosis in the  
Posterior Fossa ..... Arthur A. Porporis
- 3:00 p.m. Coffee break
- 3:15 p.m. Regional Hypothermia ..... John E. Adams
- 3:45 p.m. Vascular Surgery of the Posterior  
Fossa ..... James L. Poppen
- 4:15 p.m. The Effects of Trauma on the  
Brain Stem ..... Nathan Malamud
- 4:45 p.m. Adjournment and Announcements
- 6:30 p.m. Cocktail Party — Mural Room
- 7:30 p.m. Dinner Dance — Mural Room

Dress is optional. Please wear name tag!

Parasagittal lesions, post fossa

-NOTES-

Cortical Tumors

96% of <sup>Tumors</sup> caused abnormality in EEG. If normal record very much against a cortical tumor. 98% were focal. 96% of dITs <sup>foci</sup> correctly localized. DITs - slow, irregular waves. No rhythm.

Widespread focal dysrhythmia - correctly localized Tumors.

Suppression of alpha rhythm on side of lesion - Early suggestive sign. slow irregular waves.

The higher the amplitude and the slower the dITs the more destruction & date the process.

EEG abnormality comes from surrounding cerebrum. Alpha rhythm may

Delta focus may develop rapidly. Case of metastatic tumor with marked change in 3 1/2 months even though temporal lobe seizures were controlled. The delta focus is not suppressed by the medication even though the seizures are suppressed.

Sleep does not activate delta foci but may activate spike foci. spike focus may be suppressed by medication.

Posterior Fossa Tumors

Bilateral dysrhythmic disturbance but may be normal

para-cerebellar angle Tumors 46% normal  
and vent. Tumors 17% normal.  
post fossa tumor - cerebellar - ? about 18%

slow waves in para-cerebellar region in post fossa tumors in children but must be careful as 12 slow waves in normal children

## Scientific Meeting

Friday, October 31

### Colonial Room

- 9:30 a.m. The Surgical Treatment of Vertigo with Follow-up on  
Walter Dandy's Cases  
Otologic Aspects . . . . . Stacy R. Guild  
Neurosurgical Aspects . . . . . Robert E. Green
- 10:30 a.m. Trends in the Application of Stereotaxy to the  
Brain Stem . . . . . Arthur A. Ward
- 11:00 a.m. Ten Years' Experience in Stereotaxic  
Surgery . . . . . Henry T. Wycis
- 11:30 a.m. Post Traumatic Epilepsy — An Inquiry into the Evolu-  
tion and Dissolution of Convulsions Following Head  
Injury . . . . . Earl Walker
- 12:15 p.m. Free Afternoon and Evening

Saturday, November 1

### Colonial Room

- 9:30 a.m. The Biomedical Aspects of Space  
Flight . . . . . General Don Flickinger
- 10:00 a.m. The Dawn of Neurosurgery . . . . . Earl Walker
- 10:45 a.m. Panel Discussion of Preceding Papers — All Speakers —  
Moderator . . . . . Howard C. Naffziger
- 12:00 Noon Adjournment

DEPARTURE SATURDAY NIGHT  
FOR CONTINUATION  
OF SCIENTIFIC MEETING  
IN HONOLULU

Tumors may cause bifrontal slow dysrhythmia  
+ high voltage even though tumor is post.  
The slowest waves are <sup>most</sup> important - voltage may not be high

**-NOTES-**

Adult group - post fossa Tumors - Abnormality  
shifts anteriorly. Eye opening shifts  
anteriorly suppresses this but not specific  
as such may occur in seizures.

Bilateral slow rhythm in post fossa Tumors  
pseudo-tumor cerebri - case study - normal EEG.

marked alpha asymmetry may be significant

It is true that benign Tumors such  
as meningiomas may be difficult to  
diagnose by EEG. Slow growing 5-10%  
of meningiomas show a dysrhythmia initial  
at a delta focus.

Subdural Hematomas - Suppression of alpha  
rhythm important but not always present.

Delta focus - most important.

Unilateral 55% correctly localized.

subdural 30% did not local

15% incorrect local

Alpha may be increased in subdural but  
slow waves are important.

Bilateral diffuse rhythms - drowsiness in  
subdural + ? effect on brain stem

Scar foci following subdural hematomas  
can later lead to sensory seizures.

Vascular lesion ligature of diencephalon.  
Delta focus developed following ligature.

Delta vascular lesion may show as  
much delta as in 14 experimental lesion.

## GUEST SPEAKERS

- ADAMS, John E., M.D. Associate Professor of Neurological Surgery and Chairman, Sub-department of Neurological Survey, University of California Medical Center, San Francisco, California
- BICKFORD, Reginald G., M.D. Professor of Physiology, University of Minnesota, Head of Laboratory of Electroencephalography and Neurophysiology, Mayo Clinic, Rochester, Minnesota
- FLICKINGER, Don, M.D. Brigadier General, USAF (MC), Surgeon and Director of Life Sciences, Andrews Air Force Base, Washington 25, D.C.
- FRENCH, J. Douglas, M.D. Professor of Anatomy (In Residence) and Clinical Professor of Surgery, University of California School of Medicine, Los Angeles, California
- GARDNER, W. James, M.D. Chief, Department of Neurological Surgery, Cleveland Clinic, Cleveland, Ohio
- GREEN, Robert E., M.D. Chief, Section of Neurological Surgery, Hospital Center at Orange, Orange, New Jersey
- GUILD, Stacy R., M.D. Chief, Otological Laboratory, The Johns Hopkins Hospital, Baltimore, Maryland
- HAMBY, Wallace B., M.D. Professor of Neurological Surgery, University of Buffalo School of Medicine; Chief, Department of Neurological Surgery, Buffalo General and Children's Hospitals, Buffalo, New York
- KAPLAN, Harry A., M.D. Associate Professor of Neurosurgery, State University of New York, Down State Medical Center, Brooklyn, New York
- MALAMUD, Nathan, M.D. Clinical Professor of Neuropathology and Psychiatry, University of California Medical Center, San Francisco, California
- NAFFZIGER, Howard C., M.D. Professor of Neurological Surgery, University of California Medical Center, San Francisco, California
- POPPEN, James L., M.D. Chief, Department of Neurological Surgery, The Lahey Clinic, Boston, Massachusetts
- PORPORIS, Arthur A., M.D. Instructor in Clinical Radiology, Washington University School of Medicine; Associate Radiologist, St. Luke's Hospital, St. Louis, Missouri



WALKER, Earl, M.D. Professor of Neurological Surgery, The Johns Hopkins University, Baltimore, Maryland

WARD, Arthur A., M.D. Professor and Head of Division of Neurosurgery, University of Washington School of Medicine, Seattle, Washington

WYCIS, Henry T., M.D. Clinical Professor of Neurological Surgery, Temple University School of Medicine, Philadelphia, Pennsylvania

### SCIENTIFIC EXHIBITORS

Evaluation of Routine Skull Films in Intracranial Meningiomas — Fleming Jolley, Emory University, Atlanta, Georgia

Differential Diagnosis of Tumor Types by Angiography Pattern — William E. Hunt, John N. Meagher, Chris B. Theodotou, William Molnar, College of Medicine, Ohio State University, Columbus, Ohio

Neurology and Neurosurgical Problems in Central Africa — Lawrence F. Levy, Medical Centre, Salisbury, South Rhodesia, Africa

William W. McKinney, Fort Worth, Texas

Cranioplastics in Neurological Surgery — William T. Spence, Washington, D.C.

Observations and Experimental Brain Lesions under Hypothermia — Maitland Baldwin, Edward Laskowski, and Igor Klatzo, National Institute of Neurological Diseases and Blindness, Bethesda, Maryland

### COMMERCIAL EXHIBITORS

American Sterilizer Company  
Codman and Shurtleff  
Coreco Research Corporation  
Grass Instrument Company  
Ries Manufacturing Company  
Storz Instrument Company

## GEOGRAPHICAL ROSTER

### AFRICA

#### SOUTH RHODESIA

Levy, Laurence Fraser

### ALABAMA

#### BIRMINGHAM

Graham, Stanley E.  
Haynes, Walter G.  
Sweeney, Donald B.

#### MOBILE

Cowley, Howard S.  
Mudd, Robert H.

#### MONTGOMERY

Bostwick, Jackson L.  
Graham, Wistar L.  
Silvernail, William I.

### ARIZONA

#### PHOENIX

Eisenbeiss, John A.  
Pfeil, Edgar T., Jr.  
Steelman, Harry E.

#### TUCSON

Elkins, Charles W.  
Fonseca, Juan E.

### ARKANSAS

#### LITTLE ROCK

Adametz, John H.  
Cashion, Ernest L.  
Padberg, Frank

### CALIFORNIA

#### BAKERSFIELD

✓ Ablin, George  
Cummings, Kenneth L.

#### BEVERLY HILLS

Andler, Maxwell M., Jr.  
Seletz, Emil

#### FRESNO

Pace, John W.  
Zealear, David S.

### LONG BEACH

Mense, Jackson S.

### LOS ANGELES

Abbott, Kenneth H.  
Brown, M. Hunter  
Northrop, Paul E.  
Raney, Aidan A.

### LYNWOOD

Amyes, Edwin W.

### MENLO PARK

Golden, James B.

### NEWPORT BEACH

Freshwater, Donald B.

### OAKLAND

Siefert, H. Jack  
Van Horn, Philip R.  
Weyand, Robert D.

### NORTH HOLLYWOOD

Amerongen, Frederick  
Huston, William A.

### PALO ALTO

Meub, Daniel W.

### SACRAMENTO

Hickey, William C.

### SAN DIEGO

Crue, Benjamin L., Jr.  
Freeman, David G.  
Greenwood, Robert C.

### SAN FRANCISCO

Cross, Glen O.  
Carol, Hugh W.,  
Hoessly, Gian-Fortunat  
Kingman, Allen F., Jr.

### SAN JOSE

*Bill Anderson*  
Becker, Leon M.  
Harper, W. Henry  
Markham, James W.

### SAN RAFAEL

Hanzel, Samuel E.

### SANTA MONICA

Yuhl, Eric T.

## GEOGRAPHICAL ROSTER Continued

### SANTA ROSA

Carlin, Maurice P.  
McCaskill, Daniel

### SHERMAN OAKS

Polmeteer, Frank A.

### STOCKTON

Huff, Thomas J.

## CANADA

### ALBERTA

Taylor, Charles W.

### MANITOBA

Parkinson, Dwight

### NEWFOUNDLAND

Sutherland, Daniel L.

### ONTARIO

Dolan, Ronald A.  
Drake, Charles G.  
Mayer, Jack A.  
Morley, Thomas P.  
Mount, Harry T. R.

### ST. JOHN, N.B.

Rosen, Harold Jacob

### VANCOUVER 1, B.C.

Cluff, J. W.

## CENTRAL AMERICA

### EL SALVADOR

Juarez, Antonio Ramirez  
Amaya  
Kuri, Jose

### MEXICO, DF

Beltran, Patricio  
Del Cueto, Ramon  
Guzman, Hernando  
Mariscal, G. Gonzalez  
Olive, J. Ignacio  
Velasco, Suarez

## COLORADO

### COLORADO SPRINGS

Sheldon, Keith W.

### DENVER

Boyd, Harry R.  
Griffin, John G.  
McClintock, Homer G.

## CONNECTICUT

### BRIDGEPORT

Paget, John F.

### HARTFORD

Dunsmore, Rembrandt  
Reilly, Francis G.

### NEW HAVEN

Davey, Lycurgus M.  
McDonnell, Robert R.  
Robinson, Franklin

### STAMFORD

McNerney, John C.

### WATERBURY

O'Brien, Francis H.  
Sturman, Robert H.

## CUBA

### VEDADO

Picaza, Jorge A.

## DELAWARE

### WILMINGTON

Gordy, Philip D.  
Hillyard, Raymond W.  
Olmedo, Livio

## DISTRICT OF COLUMBIA

### WASHINGTON, D.C.

Ammerman, Harvey H.  
Gallagher, John P.  
Hayes, George J.  
Horwitz, Norman H.  
Johnson, Donald A.  
Mendelsohn, Robert A.  
Rizzoli, Hugo  
Spence, William T.

## GEOGRAPHICAL ROSTER Continued

### FLORIDA

#### CORAL CABLES

Perlmutter, Irwin  
Strain, Richard E.

#### DAYTONA BEACH

Scott, Thomas E., Jr.

#### JACKSONVILLE

Bird, C. Ashley  
Grizzard, Vernon T.  
Sullivan, E. J.

#### LAKELAND

Gould, Purdue L.

#### MIAMI

✓ Barrett, J. W.  
Keedy, Christian  
Tolmach, Robert S.

#### ORLANDO

Howarth, J. Cornall  
\*Neill, Robert G.

#### PALM BEACH

Schwab, John E.

#### PENSACOLA

Kimbell, Fariss D., Jr.

#### ST. PETERSBURG

Sullivan, Benjamin H.  
Thompson, John M.

#### TAMPA

Aliff, Robert C.

### GEORGIA

#### ATLANTA

Bickers, Donald S.  
Chambers, William R.  
Dowman, Charles E.  
Jolley, Fleming  
Mabon, Robert  
Sears, Robert A.  
Walker, Exum

#### AUGUSTA

Manganiello, Louis O. J.  
Nichols, Pomeroy

#### COLUMBUS

Hazouri, Louis A.

#### SAVANNAH

Clary, Warren U.

### HAWAII

#### HONOLULU

Lowrey, John J.

### IDAHO

#### BOISE

Kiefer, Edward J.

### ILLINOIS

#### CHICAGO

Amador, Luis V.  
Corcoran, Charles E.  
Johnson, A. Beaumont  
Manfredi, Roland  
Oberhill, Harold R.  
Speigel, I. Joshua  
Voris, Harold C.

#### JOLIET

McCoy, Archibald D.

#### MOLINE

Goldstein, Stanton L.

#### PARK RIDGE

Duffy, James J.

#### ROCKFORD

Anderson, Robert L.  
Van Landingham, John H.

#### SPRINGFIELD

Barringer, Floyd S.

### INDIA

#### VELLORE (SOUTH INDIA),

#### N.A. DISTRICT

Chandy, Jacob

### INDIANA

#### FORT WAYNE

Hastings, Warren C.  
✓ Manning, George C., Jr.

#### GARY

Nilges, Richard G.

#### HAMMOND

Westhaysen, Peter Vander

## GEOGRAPHICAL ROSTER Continued

### INDIANAPOLIS

Cure, Charles W.  
Fausset, C. Basil  
Hahn, E. Vernon  
Hetherington, John A.  
Manders, Karl L.  
Russell, John

### SOUTH BEND

Baran, Charles  
Ebin, Judah L.  
Feferman, Martin E.

### IOWA

#### DES MOINES

Abbott, Walter D.  
Bakody, John T.  
Hayne, Robert A.

#### IOWA CITY

Skultety, F. Miles

#### SIOUX CITY

Brown, Carroll A.

### ISRAEL

#### JERUSALEM

Beller, Aaron J.

### ITALY

#### 30-ROMA

Guidetti, Benianimo

### KANSAS

#### KANSAS CITY

Brackett, Charles E., Jr.  
Cooper, Jack R.

#### TOPEKA

Tozer, Richard C.  
Woods, Robert P.

#### WICHITA

Schweinfurth, James P.

### KENTUCKY

#### LOUISVILLE

Marshall, Thomas M.

Reed, H. Lester

Segeberg, Ludwig H.

Smiley, Gordon L.

### LOUISIANA

#### BATON ROUGE

Edelman, Joseph M.  
Forman, Oliver Duane

#### NEW ORLEANS

Colclough, John A.  
Llewellyn, R. C.

### MARYLAND

#### BALTIMORE

Arnold, James  
Horning, E. Douglas  
McQueen, John Donald  
Mosberg, William H., Jr.  
Thompson, Raymond K.

#### BETHESDA

Baldwin, Maitland  
Van Buren, John

### MASSACHUSETTS

#### BOSTON

Brougham, Milton F.  
Humphreys, Storer P.  
Landry, Christopher L.  
Selverstone, Bertram  
Walker, James C.

#### BROOKLINE

Hinchey, Thomas P. R.

#### CHELSEA

Witt, Joseph A.

#### NEW BEDFORD

Hastings, Nelson

#### SPRINGFIELD

Cheney, Roger H.  
Pava, Arthur A.

### MICHIGAN

#### ANN ARBOR

Schneider, Richard C.

## GEOGRAPHICAL ROSTER Continued

### BAY CITY

Taheri, Z. E.

### DETROIT

Eisenbrey, Arthur B., Jr.  
Gass, H. Harvey  
Gurdjian, E. S.  
Knighton, Robert S.  
McGuire, John F.  
Nielsen, Aage  
Webster, John E.

### FLINT

Dawson, Ralph E.

### GRAND RAPIDS

Lamberts, Austin E.  
List, Carl F.  
Williams, John R.

### KALAMAZOO

Weadon, Preston S.

### PONTIAC

Gates, Edward M.  
Martin, Francis A.

### SAGINAW

Farley, A. W., Jr.

### MINNESOTA

#### DULUTH

Strewler, Gordon J.

#### MINNEAPOLIS

Blake, Paul S.  
Olson, C. Kent  
Titrud, Leonard

#### ROCHESTER

Dodge, Henry W., Jr.  
Svien, Hendrick J.

#### SIoux FALLS

Smith, George W.

#### ST. PAUL

Merrick, Robert L.

### MISSISSIPPI

#### JACKSON

Andy, Orlando J.

### MISSOURI

#### KANSAS CITY

Carmichael, Francis A., Jr.  
Forsythe, Robert W.  
Lewis, Revis C.  
Weiford, Edward C.  
Wu, William O.

#### SPRINGFIELD

McAlhany, Howard J.

#### ST. LOUIS

Palazzo, Frank A.  
Schaerer, Jaques P.  
Smolik, Edmund A.

### MONTANA

#### BILLINGS

Schwidde, Jess T.

#### GREAT FALLS

Johnson, Alexander C.

### NEBRASKA

#### LINCOLN

Gogela, Louis

#### OMAHA

Muehlig, Wilbur A.

### NEVADA

#### LAS VEGAS

Ver Bruggen, Adrien

### NEW HAMPSHIRE

#### HANOVER

Fisher, Robert G.  
Sachs, Ernest, Jr.

### NEW JERSEY

#### HACKENSACK

Rezende, Nilson

#### JERSEY CITY

Winokur, Gerald L.

#### MORRISTOWN

Kuhn, Robert A.

## GEOGRAPHICAL ROSTER Continued

### NEWARK

Medinets, Howard E.  
Somberg, Harold M.

### SOUTH ORANGE

Green, Robert E.

### TRENTON

Scheuerman, Walter G.

### NEW MEXICO

#### ALBUQUERQUE

Miller, Leroy J.  
Morgan, Clinton W., Jr.

### NEW YORK

#### ALBANY

Kite, William C., Jr.

#### BROOKLYN

Cook, Albert William

#### BUFFALO

Angelo, Martin A.  
Cohn, George A.  
Zoll, John G.

#### ELMIRA

Corradini, Everett W.

#### GARDEN CITY

Sengstaken, Robert W.

#### HEMPSTEAD

Epstein, Joseph

#### JAMESTOWN

Wright, Robert B.

#### LONG ISLAND

Thelen, Emil P.

#### MANHASSET

Shepard, John W.

#### NEW YORK

Carton, Charles A.  
Cooper, Irving S.  
Daniels, James T.  
Ransohoff, Joseph  
Turpin, William R.

### NIAGARA FALLS

Slepian, Alexander

### ORCHARD PARK

Perese, Dogan M.

### RIVERDALE

Ralston, Bruce L.

### ROCHESTER

Brzustowicz, Richard  
McDonald, Joseph D.  
Wiley, J. LaRue  
Zinker, Leonard L.

### SCHNECTADY

Haines, Gerald L.  
Mason, Thomas H.

### SYRACUSE

Batkin, Stanley  
King, Robert B.

### WHITE PLAINS

Gang, Kenneth M.

### NORTH CAROLINA

#### CHAPEL HILL

Dugger, Gordon S.

#### CHARLOTTE

Bellows, Rowland T.  
Blanchard, George C.  
Culbreth, George C.  
Pitts, William R.

#### DURHAM

Heusner, A. Price  
Nashold, Blaine Sanders, Jr.

#### RALEIGH

Allen, LeRoy

#### WINSTON-SALEM

Davis, Courtland, Jr.  
Jeffreys, Everett  
McClure, Claude

### NORTH DAKOTA

#### FARGO

Christoferson, Lee A.  
Gustafson, Maynard B.

## GEOGRAPHICAL ROSTER Continued

### OHIO

#### AKRON

Baird, William C.  
Weinberger, Laurence M.

#### CINCINNATI

Devanney, John W., Jr.  
Hunter, Curwood R.  
McBride, Bert H.  
McLaurin, Robert  
Osher, Daniel  
Slemmer, Robert E.

#### CLEVELAND

Bishop, Edward J.  
Bloor, Byron Michel  
Booth, George T.  
Hegarty, William M.  
Ling, Alexander  
Trowbridge, William V.

#### COLUMBUS

Hunt, William E.  
Leimbach, Warren H.  
Meagher, John N.  
Price, Pliny A.  
Retter, Richard  
Sayers, Martin Peter  
Secrest, Roy J.

#### DAYTON

Hollister, Nathaniel R.  
Hughes, Owen Floyd  
Roth, David B.

#### HAMILTON

Simpson, James R.

#### LIMA

Glass, Bernard

#### TOLEDO

Booth, George T.  
Earnest, Franklin III  
Hopple, Theron L.  
Shuer, Bernard B.  
Webb, J. Hugh

### OKLAHOMA

#### OKLAHOMA CITY

Lisle, A. C., Jr.  
Rutledge, Robert

### TULSA

Imler, Robert L., Jr.  
Stowell, Averill

### OREGON

#### PORTLAND

Austin, George M.  
Kloos, Edward K.  
Kvernland, Bruce N.

### PENNSYLVANIA

#### ALLENTOWN

Jaeger, Robert M.

#### BETHLEHEM

Gay, James R.

#### ERIE

Kinal, Murl E.  
Shafer, William A.

#### HARRISBURG

Markley, George M.

#### LANCASTER

Polcyn, John L.

#### PHILADELPHIA

Groff, Robert A.  
Jones, Robert K.  
Lin, Paul  
Murtagh, Frederick  
Olsen, Axel K.  
van den Noort, Gordon

#### PITTSBURGH

Baker, Robert L.  
Grunnagle, Jerome F.  
Lemmen, Lloyd Jean

#### READING

Johnson, Herbert C.

#### UPPER DARBY

Brady, Joseph A.

### PHILIPPINE ISLANDS

#### MANILA

Cube, Henry M.



## GEOGRAPHICAL ROSTER Continued

### PUERTO RICO

#### SANTURCE

de Arellano, Max Ramirez  
Guzman-Lopez, Luis R.

### RHODE ISLAND

#### PROVIDENCE

Silver, Maurice  
Stoll, Julius, Jr.

### SOUTH AMERICA

#### ARGENTINA

Givre, Alfredo

#### COLUMBIA

Mejia-R, Ismael

#### URUGUAY

Iniguez, Roman Arana

#### VENEZUELA

Niochet, Arminio Martinez

### SOUTH CAROLINA

#### CHARLESTON

Martin, Luther C.

#### GREENVILLE

Espey, Frank F.  
Wrenn, Frank R.

### TENNESSEE

#### CHATTANOOGA

Boehm, Walter E.

#### KINGSPORT

O'Connell, Frank B., Jr.

#### KNOXVILLE

Smith, W. Edison

#### MEMPHIS

Cannon, Bland W.  
DeSaussure, Richard L.  
Raskind, Robert  
Scheibert, Charles D.  
Schultz, Elmer C.  
Tyrer, A. Roy  
Williams, James R.

### NASHVILLE

Cobb, Cully A., Jr.  
McClure, Christopher C., Jr.

### TEXAS

#### AUSTIN

LaLonde, Albert A.

#### BEAUMONT

Rafes, Earl H.  
✓ Starr, Harry

#### CORPUS CHRISTI

Klotz, Joseph G.

#### DALLAS

Boland, Grant L.  
Cherry, Glenn R.  
Nash, Tom M.  
Wilson, Charles

#### EL PASO

Stratemeyer, Winslow P.

#### FORT WORTH

Rehfeldt, Frederick C.

#### GALVESTON

Jackson, Ira J.

#### HOUSTON

Ashkenazy, M.  
Caram, Pedro C.  
Fountain, Edmund M.  
Greenwood, James, Jr.  
Jones, J. Randolph  
Pollard, Claude, Jr.  
Robertson, Joseph W.

#### LACKLAND AIR FORCE BASE

Wallace, William E.

#### LUBBOCK

Dunn, Jack, Jr.  
Evans, William G.

#### SAN ANTONIO

Hardy, Robert C.  
Munslow, Ralph A.  
Price, Richard D.

#### WACO

Slade, Harry

## GEOGRAPHICAL ROSTER Continued

### UTAH

SALT LAKE CITY  
Chou, Shelley N.

### VERMONT

BURLINGTON  
Wallman, Lester J.

### VIRGINIA

CHARLOTTESVILLE  
de Martinez-G, Juan  
Fairman, David

NEWPORT NEWS  
Coppola, Armando R.

NORFOLK  
McFadden, Joseph T.

RICHMOND  
Kell, Joseph F., Jr.  
Kendrick, John F.

ROANOKE  
Tice, William P.  
Weaver, Edgar N.

### WASHINGTON

SEATTLE  
MacKay, Hunter J.  
Stafford, Donald E.

### SPOKANE

Kessler, Alfred R.  
Lander, Howard

### WEST VIRGINIA

BLUEFIELD  
Hillier, William F., Jr.

CHARLESTON  
Caudill, Carrel M.  
\*Wilson, Archer A.

### WISCONSIN

MADISON  
Suckle, Henry M.

MILWAUKEE  
Cleveland, David  
Levin, Jules B.  
Mufson, Joseph A.

### NEENAH

Suechting, Ralph L.  
\* Indicates Member is Deceased

## ALPHABETICAL ROSTER

| Member's Name          | Office Address             | City and State      | Wife's Name | Home Address                            |
|------------------------|----------------------------|---------------------|-------------|---|
| Abbott, Kenneth H.     | 1720 New Jersey St.        | Los Angeles, Calif. | Mary Ann    | 1616 Nazbeth Lane, Glendale             |
| Abbott, Walter D.      | 900 Des Moines Bl.         | Des Moines, Iowa    | Ada Lee     | 4301 Grand Ave.                         |
| Ablin, George          | 2741 "H" St.               | Bakersfield, Calif. | Mildred     | 1625 Camino Primavera                   |
| Adamez, John H.        | 1014 Donaghey Bl.          | Little Rock, Ark.   | Helen       | 4713 Lockridge Rd.                      |
| Aliff, Robert C.       | 814 Citizens Bl.           | Tampa, Florida      | Martha      | 529 Lucerne, Davis Islands              |
| Allen LeRoy            | 309 Woodburn Rd.           | Raleigh, N.C.       | Gloria      | 1601 Ridge Rd.                          |
| Amador, L. V.          | 700 N. Michigan Ave.       | Chicago, Ill.       | Bernice     | 1104 S. Western Ave., Park Ridge, Ill.  |
| Amerongen, Frederick   | 10628 Riverside Dr.        | N. Hollywood, Cal.  | Peggy       | 10153 Valley Spring Lane                |
| Ammerman, Harvey H.    | 2025 Eye St., N.W.         | Washington 6, D.C.  | Lenell      | 5511 Uppingham St., Chevy Chase 15, Md. |
| Amyes, Edwin W.        | 3590 Imperial Highway      | Lynwood, Cal.       | Muriel      | 2225 Roscomare Rd., L. A. 24, Calif.    |
| Anderson, Robt. L.     | 303 N. Main St.            | Rockford, Ill.      | Lillian     | 404 Calvin Park Blvd.                   |
| Ander, Maxwell M., Jr. | 414 N. Camden Dr.          | Beverly Hills, Cal. | Valeda      | 1103 Benedict Canon Dr.                 |
| Andy, Orlando J.       | Univ. of Miss. Med. Center | Jackson, Miss.      |             |   |
| Angelo, Martin A.      | 591 Delaware Ave.          | Buffalo 2, N.Y.     | Marie R.    | 286 Brompton Rd., Williamsville         |
| Arnold, James          | 11 E. Chase S.             | Baltimore 2, Md.    | Frances T.  | 305 Greenwood Rd., Ruxton               |
| Askenazy, Moses        | 910 Medical Towers         | Houston 25, Tex.    | Vicki       | 4059 Durness Way                        |
| Austin, George M.      | Div. of Neurosurg.         | Portland, Oregon    | Nancy       | 1024 S.W. Davenport St.                 |
| Baird, Wm. C.          | U. of Oregon Med. Sch.     | Akron 8, Ohio       | Lois        | 2325 14th St., Cuyahoga Falls           |
| Baker, Robt. L.        | 900 2nd Nat. Bank Bl.      | Pittsburgh 22, Pa.  | Barbara     | 332 Canterbury Dr.                      |
| Bakody, John T.        | 4035 Jenkins Arcade Bl.    | Des Moines, Iowa    | Marian      | 2929 S.W. 30th                          |
|                        | 900 Des Moines Bl.         |                     |             |   |
| Baldwin, Maitland      | Nat. Inst. Neurol.         | Bethesda 14, Md.    | Helen       |   |
| Baran, Charles         | Dis. and Blindness         | South Bend, Ind.    | Audrey      |   |
| Barrett, J. W.         | 404 Sherland Bldg.         | Miami 37, Fla.      | Dolores     | 1646 N.E. 110th Terr.                   |
| Barringer, Floyd S.    | 2227 Biscayne Blvd.        | Springfield, Ill.   | Winifred    | R.R. 6                                  |
| Batkin, Stanley        | 704 N. 1st St.             | Syracuse 2, N.Y.    | Helen       | 400 Scott Ave.                          |
| Becker, Leon M.        | 713 E. Genesee St.         |                     |             |   |
| Beller, Aaron J.       | Century Med. Center,       | San Jose 26, Calif. |             |   |
| Bellows, Rowland T.    | 265 Meridian Rd.           | Jerusalem, Israel   |             |   |
| Beltran, Patricia      | c/o Rothschild Hadassah    | Charlotte 7, N.C.   |             |   |
|                        | Univ. Hosp., Box 499,      | Mexico D.F., Mex.   |             |   |
|                        | 1012 Kings Dr.             |                     |             |   |
|                        | Central Quirurgica         |                     |             |   |
|                        | Zacatecas 236-103          |                     |             |   |

## ALPHABETICAL ROSTER Continued

| Member's Name               | Office Address                | City and State         | Wife's Name | Home Address                          |
|-----------------------------|-------------------------------|------------------------|-------------|---------------------------------------|
| Bickers, Donald S.          | 710 Peachtree St., N.E.       | Atlanta, Ga.           | Joyce       | 1800 Garraux Rd., N.W.                |
| Bird, C. Ashley             | 443 St. James Bl.             | Jacksonville, Fla.     | Esther      | 4146 Water Oak Lane                   |
| Bishop, Edward J.           | 1638 Hanna Bl.                | Cleveland 15, Ohio     | Jolie       | 10633 Fitzwater Rd., Brecksville      |
| Blake, Paul S.              | 1050 Med. Arts Bl.            | Minneapolis, Minn.     | Patricia    | 4640 Caribou Dr., Hopkins             |
| Blanchard, Geo. Carswell    | Drs. Bl., Kings Dr.           | Charlotte 7, N.C.      | Rosemary    | 1701 Brandon Rd.                      |
| Bloor, Byron Michel         | 3395 Scranton Rd.             | Cleveland 9, Ohio      | Noreen      | 2514 Edgehill Rd., Cleveland Heights  |
| Boehm, Walter E.            | 540 McCallie Ave.             | Chattanooga, Tenn.     | Mary        | 1630 Hillcrest Rd.                    |
| Bo'and, Grant L.            | 1423 Med. Arts Bl.            | Dallas 1, Tex.         | Ann S.      | 2831 Clydedale Dr.                    |
| Booth, Geo. T.              | 1006 Secor Hotel              | Toledo, Ohio           | Catherine   | 4511 Secor Rd.                        |
| Bostwick, Jackson L.        | 504 Bell Bl.                  | Montgomery 4, Ala.     | Mary E.     | 2108 Rosemont Dr.                     |
| Boyd, Harry R.              | 3705 E. Colfax Ave.           | Denver, Colorado       | Virginia    | 2302 E. Dartmouth Ave., Englewood     |
| Brackett, Chas. E., Jr.     | Univ. Kan. Med. Cen.          | Kansas City 12, Kans.  | Donna R.    | 8825 Aberdeen, Prairie Village 15     |
| Brady, Jos. A.              | 408-09 McClatchy, Bl.         | Upper Darby, Pa.       | Elizabeth   | 155 Union Ave., Bala-Cynwyd           |
| Brougham, Milton F.         | 412 Beacon St.                | Boston, Mass.          | Ann         | 74 Dixwell Ave., Quincy               |
| Brown, Carroll A.           | 809 Badgerow Bl.              | Sioux City 1, Iowa     | Imogene M.  | 3923 Orchard St.                      |
| Brown, M. Hunter            | 1001 Gayley Ave.              | W. Los Angeles, Calif. | Martha Jane | 1667 N. Amalfi Dr., Pacific Palisades |
| Brzustowicz, Richard        | 277 Alexander St.             | Rochester 7, N.Y.      | Alice       | 366 Oakdale Dr.                       |
| <b>C</b>                    |                               |                        |             |                                       |
| Cannon, Bland W.            | 1092 Madison Ave.             | Memphis 4, Tenn.       | Louise      | 21 E. Parkway South                   |
| Caram, Pedro C.             | 1709 The Med. Towers          | Houston 25, Tex.       | Dorothy     | 1940 Dryden                           |
| Carlin, Maurice P.          | 1120 Montgomery Dr.           | Santa Rosa, Calif.     | Victoria L. | 2708 Magowan Dr.                      |
| Carmichael, Francis A., Jr. | 170 Plaza Time Bl.            | Kansas City 12, Mo.    | Deloras     | 5750 Oakwood Rd.                      |
| Carton, Chas. A.            | 411 Nichols Rd.               | N.Y. 67, N.Y.          | Claire      | 4555 Henry Hudson Parkway             |
| Cashion, Ernest L.          | Montefiore Hosp.              | Little Rock, Ark.      | Polly       | 3603 Kavanaugh                        |
| Caudill, Carrel M.          | 210th St. and Bainbridge Ave. | Charleston 1, W. Va.   | Ann         | 815 Vogal Dr.                         |
| Chambers, William R.        | 338 Waldon Bl.                | Atlanta 8, Ga.         | Lois        | 3053 Rodenhaven Dr.                   |
| Chandy, Jacob               | 815 Atlas Bl.                 | Vellore, NA, Dist.     | Elizabeth   | 62 Bellevue Ave.                      |
| Cheney, Roger H.            | 902 Med. Arts Bl.             | South India            | Annette     | 4247 Somerville Ave.                  |
| Cherry, Glenn R.            | Chris. Med. Col. Hosp.        | Springfield 3, Mass.   | Jolene      | 6099 Holladay Blvd.                   |
| Chou, Shelley N.            | 23 Maple St.                  | Dallas 1, Tex.         | Nancy       | 1307 S. 6th                           |
| Christoferson, Lee A.       | 328 Med. Arts Bl.             | Salt Lake City 2, Utah |             |                                       |
|                             | 975 E. 1st South              | Fargo, North Dakota    |             |                                       |
|                             | Professional Bl.              |                        |             |                                       |
|                             | 702 1st Ave. South            |                        |             |                                       |

**ALPHABETICAL ROSTER Continued**

| Member's Name                        | Office Address                                      | City and State             | Wife's Name  | Home Address                           |
|--------------------------------------|---|----------------------------|--------------|--|
| Clary, Warren Upton                  | 22 Med. Arts Center                                 | Savannah, Ga.              | Ruth         | 639 E. 56th St.                        |
| Cleveland, David                     | 324 E. Wisconsin Ave.                               | Milwaukee, Wis.            | Hortense     | 1718 E. Fox Lane                       |
| Cluff, J. W.                         | 1007 Med. Dent. Bldg.                               |                            | Dorothy      |  |
|                                      | 925 W. Georgia St.                                  | Vancouver 1, B.C.          |              | 1271 West 32nd                         |
| Cobb, Cully A., Jr.                  | Vanderbilt Hosp.                                    | Nashville, Tenn.           | Helen        | 4710 Sewanee Rd.                       |
| Cohn, George A.                      | 993 Delaware Ave.                                   | Buffalo 9, N.Y.            | Ann H.       | 30 Soldiers Place                      |
| Colclough, John A.                   | 3322 Canal St.                                      | New Orleans 19, La.        | Rebecca      | 1700 Mirahean                          |
| Cook, Albert Wm.                     | 200 Hicks St.                                       | Brooklyn, N.Y.             | Beatrice S.  | 594 3rd St.                            |
| Cooper, Irving S.                    | 477 1st Ave.  | N.Y., N.Y.                 | Cherrie      | 76 Mt. Tom Rd., Pelham Manor           |
| Cooper, Jack R.                      | 665 New Brotherhood Bldg.                           | Kansas City 1, Kan.        | Isabelle     | 5300 Mission Rd.                       |
| Coppola, Armando R.                  | 2814 W. Ave.  | Newport News, Va.          | Grace M.     | 23 Sir Francis Wyatt Pl., Warwick, Va. |
| Corcoran, Charles E.                 | 7939 S. Western Ave.                                | Chicago 20, Ill.           | Betty        | 10602 S. Talman Ave.                   |
| Corradini, Everett W.                | 109 Walnut St.                                      | Elmira, N.Y.               |              |  |
| Cowley, Howard S. (Steve)            | 1720 Spring Hill Ave.                               | Mobile, Ala.               | Betsy        | 641 Tuthill Lane, Spring Hill          |
| Cross, Glen O.                       | 490 Post St.  | San Francisco 2, Calif.    | Elinor       | 3950 Ocean                             |
| Ctue, Benjamin L.                    | U.S. Naval Hosp.                                    | San Diego 34, Calif.       | Beverly M.   | U.S. Naval Hosp.                       |
| Cube, Henry M.                       | Univ. of St. Tomas Hosp., Espana St.                | Manila, Philippine Islands |              |  |
| Culbreth, Geo. C.                    | 225 Hawthorne Lane                                  | Charlotte 4, N.C.          | Fern         | 2228 Queens Rd. East                   |
| Cummings, Kenneth L.                 | 2032 17th St.                                       | Bakersfield, Calif.        | Jeanne       | 323 Pacific                            |
| Cure, Charles W.                     | 208 Hume Mansure Bldg.                              | Indianapolis 4, Ind.       | Eloise       | 5726 Sherman Ave.                      |
|                                      |   |                            |              |  |
|                                      |   | <b>D</b>                   |              |  |
| Daniels, James T.                    | 642 Park Ave.                                       | N.Y. 21, N.Y.              | Catherine C. | 74 Malvern Rd., Scarsdale              |
| Davey, Lycurgus M.                   | 255 Bradley St.                                     | New Haven 10, Conn.        | Artemis      | 1010 Hartford Tnpke., North Haven      |
| Davis, Courtland, Jr.                | Bowman Gray Sch. Med.                               | Winston-Salem, N.C.        | Marilyn      | 841 Westover Ave.                      |
| Dawson, Ralph E.                     | 1021 Mott Bldg.                                     | Flint, Mich.               | Ida          | 1617 Linwood                           |
| de Arellano, Max R.                  | 312 Professional Bldg.                              | Santurce, P.R.             | Maria        | 60 Monterey, Rio Piedras               |
| Del Cueto, Ramon de Martinez-G, Juan | Palenque 561<br>Dept. Neurol. Surg.<br>U. Va. Hosp. | Mexico DF, Mexico          |              |  |
| DeSaussure, R. L.                    | 899 Madison Ave.                                    | Charlottesville, Va.       | Phyllis      | 1336 Rugby Rd.                         |
| Devanney, John W., Jr.               | Div. Neurol. Dept.<br>Surg., Cin. Gen. Hosp.        | Memphis 3, Tenn.           | Phyllis      | 74 Pinehurst                           |
| Dodge, Henry W., Jr.                 | 200 1st St., S.W.                                   | Cincinnati, Ohio           | Peggy        | 2665 Section Rd.                       |
|                                      |   | Rochester, Minn.           | Nina         |  |

## ALPHABETICAL ROSTER Continued

| Member's Name             | Office Address                 | City and State       | Wife's Name       | Home Address                      |
|---------------------------|--------------------------------|----------------------|-------------------|-----------------------------------|
| Dolan, Ronald A.          | 214 Med. Arts Bldg.            | Hamilton, Ont., Can. | Lois A.           | 885 Long Drive, Burlington        |
| Dowman, Chas. E.          | 1415 Peachtree St. N.E.        | Atlanta 9, Ga.       | Cordelia          | 2550 Brookdale Dr., N.W.          |
| Drake, Chas. G.           | 450 Central Ave.               | London, Ont., Can.   | Ruth              | Medway Heights, R.R. 3            |
| Duffy, James J.           | 112 S. Northwest Hwy.          | Park Ridge, Ill.     | Norma             | 500 Prospect                      |
| Dugger, Gordon S.         | N. Carolina Hosp.              | Chapel Hill, N.C.    | Marilyn           | 3609 24th St.                     |
| Dunn, Jack, Jr.           | 1910 Knoxville                 | Lubbock, Tex.        | Eleanor           | 101 Waterside Lane, W. Hartford   |
| Dunsmore, Rembrandt       | 85 Jefferson St.               | Hartford, Conn.      |                   |                                   |
| <b>E</b>                  |                                |                      |                   |                                   |
| Earnest, Franklin, III    | 206, Suite,                    | Toledo 2, Ohio       | Ann               | 2923 Drummond                     |
| Ebin, Judah L.            | 709 Madison Ave.               | South Bend, Ind.     | Virginia          | 1223 N. Lawrence                  |
| Edelman, Jos. M.          | 816 Oddfellows Bldg.           | Baton Rouge, La.     | Frances           | 5844 Glenwood Dr.                 |
| Eisenbeiss, John A.       | Commerce Bldg., 333 Laurel St. | Phoenix, Arizona     | Lucile            | 99 West Northview                 |
| Eisenbrey, Arthur B., Jr. | 926 E. McDowell Rd.            | Detroit 2, Mich.     | Lucille           | 1344 Somerset                     |
| Elkins, Chas. W.          | Henry Ford Hosp.               | Tucson, Arizona      | Dorothy           | 160 S. Irving Ave.                |
| Epstein, Joseph           | 2409 E. Adams                  | Hempstead, N.Y.      | Natalie           | Kings Dr., Old Westbury, L.I.     |
| Espey, Frank F.           | 230 Hilton Ave.                | Greenville, S.C.     | Grace             | 723 Crescent Ave.                 |
| Evans, William G.         | 123 Mallard St.                | Lubbock, Tex.        |                   | 3802 47th St.                     |
| <b>F</b>                  |                                |                      |                   |                                   |
| Fairman, David            | U. of Va. Hosp.                | Charlottesville, Va. | Judith            | 4470 Brockway                     |
| Farley, A. W., Jr.        | 1803 N. Michigan Ave.          | Saginaw, Mich.       | Helen             | 7757 N. Meridian St.              |
| Fausset, C. Basil         | 2901 N. Meridian St.           | Indianapolis 8, Ind. | Carol             | 1914 Rockne Dr.                   |
| Ferferman, Martin E.      | 315 Sherland Bldg.             | South Bend, Ind.     | Constance         | 11 Ledyard Lane                   |
| Fisher, Robert G.         | Hitchcock Clinic               | Hanover, N.H.        | Virginia          | 2505 Indian Ridge Dr.             |
| Fonseca, Juan E.          | 2409 East Adams                | Tucson, Arizona      | Helen             | 4737 Greenside Lane               |
| Forman, Oliver Duane      | 901 La. Nat. Bank Bldg.        | Baton Rouge 1, La.   | Irene             | 6457 Verona Rd.                   |
| Forsythe, Robt. W.        | 411 Nichols Rd.                | Kansas City 2, Mo.   | Elizabeth         | 4033 Piping Rock Lane             |
| Fountain, Edmund M.       | 119 Hermann Profess. Bldg.     | Houston 25, Tex.     | Addie M.          | 314 Camina del Rio                |
| Freeman, David G.         | 2850 6th Ave.                  | San Diego 3, Cal.    | Susan             | 1207 Dolphin Ter., Corona del Mar |
| Freshwater, Donald B.     | 3355 Via Lido                  | Newport Beach, Cal.  |                   |                                   |
| <b>G</b>                  |                                |                      |                   |                                   |
| Gallagher, John P.        | 1150 Connecticut Ave. N.W.     | Washington 6, D.C.   | Marion            | 2415 Foxhall Rd., N.W.            |
| Gang, Kenneth M.          | 62 Waller Ave.                 | White Plains, N.Y.   | Jane Vorhaus Gang | 50 Wayne Ave.                     |
| Carol, Hugh W.            | 384 Post St.                   | San Francisco, Cal.  | Gertrude          | 20001 Warrington                  |
| Gass, H. Harvey           | 612 Kales Bldg.                | Detroit 26, Mich.    |                   |                                   |

**ALPHABETICAL ROSTER Continued**

| Member's Name         | Office Address                          | City and State                   | Wife's Name                       | Home Address   |
|-----------------------|---|----------------------------------|-----------------------------------|--|
| Gates, Edward M.      | 224 Riker Bl.                           | Pontiac, Mich.                   | Margaret                          | 3200 Allen Rd., Ortonville                                     |
| Gay, James R.         | 316 W. Broad St.                        | Bethlehem, Pa.                   | Lillian                           | 7 Moreland Ave.  |
| Givre, Alfredo        | Guatemala 4957                          | Buenos Aires, Arg. S.A.          |                                   |  |
| Glass, Bernard        | 814 Nat. Bank Bl.                       | Lima, Ohio                       | Jeannette                         | 2229 W. Elm St.  |
| Gogola, Louis         | 1318 Sharp Bl.                          | Lincoln, Neb.                    | Mildred                           | 960 S. Cotner Blvd.  |
| Golden, James B.      | 300 Homer Ave.                          | Palo Alto, Cal.                  | Emma                              | 260 Dedalera Dr., Menlo Park                                   |
| Goldstein, Stanton L. | 823 5th Ave. Bl.                        | Moline, Ill.                     | Doris                             | 2136 37th St., Rock Island                                     |
| Gordy, Philip D.      | Suite B-1 Prof. Bl.<br>Augustine Cutoff | Wilmington, Del.                 | Lisa                              | Lakewood Farm, R.D. No. 3, Newark                              |
| Gould, Pardue L.      | 1231 Lakeland Hill Blvd.                | Lakeland, Fla.                   |                                   |  |
| Graham, Stanley E.    | 2020 15th Ave., S.                      | Birmingham, Ala.                 | Frances                           | 3019 Canterbury Rd.  |
| Graham, Wistar L.     | 3810th USAF Hosp.                       | Maxwell AFB,<br>Montgomery, Ala. | Donna                             | Qrts. 811A   |
| Green, Robert E.      | 153 Irvington Ave.                      | South Orange, N.J.               | Beverly J.                        | 61 Tennyson Dr., Short Hills                                   |
| Greenwood, James, Jr. | 1117 Hermann Prof. Bl.                  | Houston 25, Tex.                 | Mary                              | 3394 Chevy Chase   |
| Greenwood, Robt. C.   | 2290 6th St.                            | San Diego 1, Cal.                | Adeline                           | 5115 Walsh Way   |
| Griffin, John G.      | 1745 Race St.                           | Denver 6, Colo.                  | Nina                              | 1625 Jasmine St.   |
| Grizzard, Vernon T.   | 420 Marshall Taylor Bl.                 | Jacksonville 7, Fla.             | Mary                              | A903 Presidential Apts., City Line Ave.                        |
| Groff, Robt. A.       | 3400 Spruce St.                         | Philadelphia 4, Pa.              | Georgiana                         | Pasadena Dr., Fox Chapel                                       |
| Grunnagle, Jerome F.  | 3600 Forbes St.                         | Pittsburgh 13, Pa.               | Ruth P.                           |  |
| Guidetti, Benanimo    | Clinica Neurologica<br>Viale Universita | 30-Roma, Italy                   |                                   |  |
| Gurdjian, E. S.       | 801 David Whitney Bl.                   | Detroit 26, Mich.                | Dorothy E.                        | 19385 Renfrew  |
| Gustafson, Maynard B. | 702 1st Ave., S.                        | Fargo, North Dakota              | Dorothy                           | 1410 S. 5th Ave.   |
| Guzman, Hernando      | Niza 46                                 | Mexico 6, D.F., Mexico           |                                   |  |
| Guzman-Lopez, Luis R. | Doctors Hosp.,<br>P.O. Box 8398         | Santurce, P.R.                   | Josefina Vizcarrendo<br>de Guzman | Villa Internacional No. 2, Casa No. 5<br>Pte. Las Marias, P.R. |
| Hahn, E. Vernon       | 23 E. Ohio, No. 912                     | Indianapolis 4, Ind.             | Marietta                          | 247 Juniper Dr., West Hill                                     |
| Haines, Gerald L.     | 1541 Union St.                          | Schenectady 8, N.Y.              | Frances                           | 626 Wakerobin Lane   |
| Hanzel, Samuel E.     | 600 Mission Ave.                        | San Rafael, Cal.                 | Lola                              | 416 Ira  |
| Hardy, Robt. C.       | 1233 Nix Prof. Bl.                      | San Antonio, Tex.                | Ida Fae                           | 15865 Alta Vista Way   |
| Harper, W. Henry      | 648 E. Santa Clara St.                  | San Jose, Cal.                   | Priscilla                         | Swift Rd., South Dartmouth                                     |
| Hastings, Nelson      | 34 Arnold St.                           | New Bedford, Mass.               | Barbara                           |  |
| Hastings, Warren C.   | 811 Ewing St.                           | Ft. Wayne 2, Ind.                | Betty                             |  |

### ALPHABETICAL ROSTER Continued

| Member's Name         | Office Address  | City and State  | Wife's Name  | Home Address  |
|-----------------------|---|---|--|---|
| Hayes, Geo. J.        | Chief Neurosurg. Serv.<br>Walter Reed A.H.<br>414 Equitable Bld.<br>2255 Highland Ave.<br>1525 13th Ave.<br>15644 Madison Ave.<br>1633 N. Capitol Ave.<br>Box 176, Rt. 1<br>4101 J St.<br>Bluefield Sanatorium<br>307 Ramsey St.  | Washington 12, D.C.<br>Des Moines, Iowa<br>Birmingham 5, Ala.<br>Columbus, Ga.<br>Cleveland 7, Ohio<br>Indianapolis 2, Ind.<br>Durham, N.C.<br>Sacramento 19, Cal.<br>Bluefield, W. Va.   | Catherine<br>Rose<br>Peggy<br>Katherine<br>Mary Jo   | Qtrs. 12, 15th St.,<br>Walter Reed A.M.C.<br>600 S.W. 42nd St.<br>96 Cherokee Rd.<br>2732 Techwood Dr.<br>20725 Parkcliff Dr., Fairview Park 26   |
| Hillyard, Raymond W.  | Suite B-1 Prof. Bld.<br>Augustine Cut-off<br>1101 Beacon St.<br>Tokyo USAH, APO 500<br>1129 Reibold Bld.<br>1006 Secor Hotel<br>18 W. Franklin St.<br>1150 Conn. Ave., N.W.<br>320 N. Main St.<br>242 N. Sutter St.<br>Reibold Bld.<br>264 Beacon St.<br>1275 Olentangy River Rd.<br>506 Oak St.<br>10628 Riverside Dr. | Wilmington, Del.<br>Brookline 46, Mass.<br>San Francisco, Calif.<br>Dayton, Ohio<br>Toledo, Ohio<br>Baltimore 1, Md.<br>Washington 6, D.C.<br>Orlando, Fla.<br>Stockton, Calif.<br>Dayton, Ohio<br>Boston, Mass.<br>Columbus 8, Ohio<br>Cincinnati 19, Ohio<br>N. Hollywood, Cal. | Elisabeth<br><br>Lottie<br>Lorraine<br>Frances<br>Elinor<br><br>Corinne<br>Betty<br><br>Virginia<br>Georgianna<br>Margaret | 3351 Ben Lomond Dr.<br><br>12 Rolling Rd., Rolling Pk., Claymont, Del.<br><br>4120 Dunkirk<br>701 Cathedral St.<br>7300 Brennon Lane, Chevy Chase, Md.<br>4407 Yacht Harbor Dr.<br>6400 Winthrop Place<br>98 N. Drexel<br>333 Lafayette<br>3580 Valley Meadow Rd., Sherman Oaks |
| Imler, Robt. L., Jr.  | Suite 107 Utica Sq.<br>Med. Center<br>Convencion 1287   | Tulsa, Oklahoma<br>Montevideo, Urug. S.A.   | Eleanor  | 6256 E. 35th St.  |
| Iniguez, Arana, Roman |   |   |  |   |
| Jackson, Ira J.       | U. of Tex. Med. Sch.<br>1746 Allen St.<br>705-08 O'Hanlon Bld.  | Galveston, Texas<br>Allentown, Pa.<br>Winston-Salem, N.C.   | Virginia<br>Sibyl T.   | 4600 Caduceus Place<br>1746 Allen St.<br>1950 West 1st St.  |
| Jaeger, Robt. M.      |   |   |  |   |
| Jeffreys, Everett     |   |   |  |   |



## ALPHABETICAL ROSTER Continued

| Member's Name                 | Office Address  | City and State                           | Wife's Name         | Home Address                                |
|-------------------------------|---|--|---------------------|---|
| Johnson, A. Beaumont, II      | 122 S. Mich. Ave.   | Chicago 3, Ill.                          | Jane K.             | 1350 Lake Shore Dr.                         |
| Johnson, Alexander C.         | 507 Med. Arts Bld.  | Great Falls, Montana                     |                     | 3421 6th Ave. S.                            |
| Johnson, Donald A.            | Wash. Clinic, Wisc. and Western Aves.   | Washington 15, D.C.                      | Doris E.            | 6813 Granby St., Bethesda 14, Md.           |
| Johnson, Herbert C.           | 230 N. 5th St.  | Reading, Pa.                             | Ayne                | 830 Farr Pl.                                |
| Jolley, Fleming               | Emory Univ. Box 459   | Atlanta 22, Ga.                          | Anne                | 2380 Alton Rd., N.W.                        |
| Jones, J. Randolph            | 1708 The Med. Towers  | Houston 25, Tex.                         | John D              | 3105 Ella Lee Lane                          |
| Jones, Robert K.              | Lankenau Hosp.  | Phila. 31, Pa.                           | Iris                | 211 Mill Creek Rd., Ardmore, Pa.            |
| Juarez, Antonio Ramirez Amaya | Arce No. 12F<br>Colonia-Modelo No. 7  | San Salvador, El Salvador                | Dora                | Colonia Medelo, entrada, Pasaje, Monte. "X" |
| <b>K</b>                      |   |  |                     |   |
| Keedy, Christian              | 1342 DuPont Bl.   | Miami, Fla.                              | Betty               | 5275 S.W. 92nd St., So. Miami               |
| Kell, Joseph F., Jr.          | Med. Col. of Va.<br>1200 E. Broad   | Richmond, Va.                            | Rita                |   |
| Kendrick, John F.             | 1001 W. Franklin  | Richmond 20, Va.                         | Lou                 | 8 Willway                                   |
| Kessler, Alfred R.            | 960 Paulsen Bl.   | Spokane 1, Wash.                         | Charlotte           | R.F.D. 1, Mead                              |
| Kiefer, Edward J.             | 616 Eastman Bl.   | Boise, Idaho                             | Gretchen            | 24 Blaine Dr.                               |
| Kimbell, Farris D., Jr.       | 21 E. Wright St.  | Pensacola, Fla.                          | Jane                | 732 Peyton Dr.                              |
| Kinal, Murl E.                | 5 E. 34th St.   | Erie, Pa.                                | Constance           | 1729 Bayview Dr.                            |
| King, Robt. B.                | 150 Marshall St.  | Syracuse 10, N.Y.                        | Molly               | 2 Clara Rd., Dewitt, N.Y.                   |
| Kingman, Allen F., Jr.        | Box 333, Tripler USAH<br>APO 438  | San Francisco, Cal.                      | Hazel               | c/o same address as husband                 |
| Kite, Wm. C., Jr.             | 429 State St.   | Albany 3, N.Y.                           | Dorothy-Ann H.      | Loudonville, Albany County                  |
| Kloos, Edward K.              | 1920 N.W. Johnson St.   | Portland 9, Oregon                       | Gertrude            | 3026 S.W. Cascade Dr.                       |
| Klotz, Joseph G.              | 2416 Morgan Ave.  | Corpus Christi, Tex.                     | Carol               | 341 Santa Monica                            |
| Knighton, Robt. S.            | Henry Ford Hosp.  | Detroit 2, Mich.                         | Louise              | 27486 Lathrup Blvd., Lathrup Village        |
| Kuhn, Robt. A.                | 139 South St.   | Morristown, N.J.                         | Maria Julia         | Aparted Postal 930                          |
| Kuri, Jose, Edificio          | Medico-Dental<br>19 a. avenida Norte<br>and La Calle Pte.<br>627 Med. Arts Bld. | San Salvador<br>El Salvador, Cent. Amer. | Ruth                | 3035 N.W. Greenbrier                        |
| Kvermland, Bruce N.           |   | Portland 5, Ore.                         |                     |   |
| <b>L</b>                      |   |  |                     |   |
| LaLonde, Albert A.            | 502 Cap. Nat. Bank Bld.   | Austin 16, Tex.                          | Ida Carolyn         | Wagon Wheel Farm, Rt. 2, Suda               |
| Lamberts, Austin E.           | 68 Ransom Ave. N.E.   | Grand Rapids 3, Mich.                    | Evangeline (Vangie) | 1520 Leffingwell                            |

**ALPHABETICAL ROSTER Continued**

| Member's Name           | Office Address                              | City and State                             | Wife's Name    | Home Address                         |
|-------------------------|---|--|----------------|--------------------------------------|
| Lander, Howard          | 820 S. McClellan St.                        | Spokane, Wash.                             | Elsie          | S2707 Manito Blvd.                   |
| Landry, Christopher L.  | 520 Commonwealth Ave.                       | Boston 15, Mass.                           | Barbara        | 61 Richfield Rd., Arlington          |
| Leimbach, Warren H.     | 350 E. Broad St.                            | Columbus, Ohio                             | Virginia       | 2730 Woodstock                       |
| Lemmen, Lloyd Jean      | Surg. Serv., VA Hosp.                       | Pittsburgh 40, Pa.                         | Beverly        | 4431 N. Murray Ave.                  |
| Levin, Jules B.         | 161 W. Wisconsin Ave.                       | Milwaukee, Wis.                            | Anne           | 1001 W. 56th St.                     |
| Lewis, Revis C.         | 411 Nichols Rd.                             | Kansas City, Mo.                           |                |                                      |
| Levy, Laurence F.       | 45 Fife Ave.                                | Salisbury, S.                              |                |                                      |
| Lin, Paul M.            | 4901 Oxford Ave.                            | Rhodesia, Africa                           | Sylvia R.      | 721 Kenilworth Ave.                  |
| Ling, Alexander         | 930 Hanna Bl.                               | Phila. 24, Pa.                             | Flora (Billie) | 2660 River Oaks, Rocky River         |
| Lisle, A. C., Jr.       | 1200 N. Walker                              | Cleveland, Ohio                            | Madge          | 1507 Guilford Lane                   |
| List, Carl F.           | 833 Lake Drive, S.E.                        | Oklahoma City, Okla.                       | Eva            | 401 Lakeside Dr. S.E., E. Gr. Rapids |
| Llewellyn, R. C.        | 1430 Tulane Ave.                            | Grand Rapids 6, Mich.                      | Selecta        | 15 Colonial Club Dr.                 |
| Lowrey, John J.         | 1020 Straub Clinic<br>Kapiolani St.         | New Orleans 12, La.<br>Honolulu 14, Hawaii | Catherine      | 2299B Round Top Dr.                  |
| <b>M</b>                |   |  |                |                                      |
| McAlhany, Howard J.     | 401 Prof. Bl.                               | Springfield, Mo.                           | Ruth           | 1258 E. Elm St.                      |
| McBride, Bert H.        | 506 Oak St.                                 | Cincinnati 19, Ohio                        | Gloria         | 3459 Brookline                       |
| McCaskill, Daniel       | 521 Doyle Park Dr.                          | Santa Rosa, Cal.                           | Elizabeth Jane | 3449 Verdi Vistae Dr.                |
| McClintock, Homer G.    | 1809 E. 18th St.                            | Denver 18, Colo.                           | Priscilla      | 357 Jersey St.                       |
| McClure, Christopher C. | 1903 Hayes St.                              | Nashville, Tenn.                           | Marguerite     | 3809 Estes Ave.                      |
| McClure, Claude         | Faculty Apts. Bowman<br>Gray School of Med. | Winston-Salem, N.C.                        |                |                                      |
| McCoy, Archibald D.     | 68 N. Chicago St.                           | Joliet, Ill.                               | Agnes          | 1217 W. Acres Rd.                    |
| McDonald, Joseph V.     | 260 Crittenden Blvd.                        | Rochester 20, N.Y.                         | Carolyn        | 106 Wilshire Rd.                     |
| McDonnell, Robt. R.     | 67 Trumbull St.                             | New Haven 6, Conn.                         | Patricia       | 503 Breckenridge St.                 |
| McFadden, Jos. T.       | 405 Wainwright Bl.                          | Norfolk 10, Va.                            | Marion         | 10 Cherry Hill Court, Dearborn       |
| McGuire, John F.        | 612 Kales Bl.                               | Detroit 26, Mich.                          | Kathleen       | 2461 Grandin Rd.                     |
| McLaurin, Robt.         | Div. Neurosurg. U. of Cin.                  | Cincinnati 29, Ohio                        | Katherine G.   | 111 Four Brooks Drive East           |
| McNerney, John C.       | 65 Prospect St.                             | Stamford, Conn.                            | Jean Altman    | 1115 Ramblewood                      |
| McQueen, John Donald    | Baltimore City Hosps.                       | Baltimore, Md.                             | Sally          | 382 Brentwood Dr., N.E.              |
| Mabon, Hunter           | 1211 W. Peachtree St., N.E.                 | Atlanta, Ga.                               | Leola          |                                      |
| Mackay, Hunter J.       | 1317 Marion St.                             | Seattle 4, Wash.                           | Helen          | 215 E. 71st St.                      |
| Manders, Karl L.        | 2901 N. Meridian St.                        | Indianapolis 8, Ind.                       | Helen          | 244 Wash., Oak Park                  |
| Manfredi, Roland        | 25 E. Wash. St.                             | Chicago 2, Ill.                            |                |                                      |

## ALPHABETICAL ROSTER Continued

| Member's Name            | Office Address                                | City and State        | Wife's Name      | Home Address                          |
|--------------------------|---|-----------------------|------------------|---------------------------------------|
| Manganiello, Louis O. J. | 1467 Harper St.                               | Augusta, Ga.          | Carol            | 3028 Bransford Rd.                    |
| Manning, Geo. C., Jr.    | 115 Medical Cen. Bld.<br>"Central Quirurgica" | Fort Wayne, Ind.      | Georgiana (Dana) | 4115 Indiana Ave.                     |
| Mariscal, G. Gonzalez    | Zacatecas 236-103                             | Mexico D.F., Mexico   | Gwendolyn M.     | 18800 Blythewood Dr., Los Gatos       |
| Markham, James W.        | 235 E. Santa Clara St.                        | San Jose 13, Calif.   | June             | 4106 Walnut St.                       |
| Markley, Geo. M.         | 1711 N. Front St.                             | Harrisburg, Pa.       | Nancye           | 118 Arrowhead Rd.                     |
| Marshall, Thomas M.      | 326 Fincastle Bl.                             | Louisville 2, Ky.     | Mary             | 4170 Newland Dr., Orchard Lake        |
| Martin, Francis A.       | 880 Woodward                                  | Pontiac, Mich.        | Caroline         | 4 Oak Rd., Wappoo Heights             |
| Martin, Luther C.        | 82 Rutledge Ave.                              | Charleston, S.C.      | Louise           | 1356 Waverly Place                    |
| Mason, Thos. H.          | 1001 Union St.                                | Schenectady, N.Y.     | Molly            | 53 Fraserwood Ave., Apt. 6            |
| Mayer, Jack A.           | 605 Bloor St., W.                             | Toronto, Ont., Can.   | Maxine           | 1677 Guilford Rd.                     |
| Meagher, John N.         | 1275 Orlentangy Riv. Rd.                      | Columbus, Ohio        | Lois             | 500 Melrose Pl., So. Orange           |
| Medinets, Howard E.      | 31 Lincoln Park                               | Newark, N.J.          | Greta            | 9706 Lawndale Dr., Silver Spring, Md. |
| Mejia-R, Ismael          | Carerra 13, No. 48-26                         | Bogota, Colum., S.A.  | Beverly          | 63 Portuguese Bend Rd., Rolling Hills |
| Mendelsohn, Robt. A.     | 1904 R St., N.W.                              | Washington, D.C.      | Charlotte T.     | 6 Ridge Rd., North Oaks               |
| Mense, Jackson S.        | 117 E. 8th St., No. 315                       | Long Beach, Calif.    | Betty May        | 392 Greenoaks Dr., Atherton           |
| Merrick, Robt. L.        | 917 Lowry Med. Arts Bld.                      | St. Paul 2, Minn.     | Eleanor          | 4500 Royene Dr., N.E.                 |
| Meub, Daniel W.          | 605 Cowper St.                                | Palo Alto, Calif.     | Lillian          |                                       |
| Miller, Leroy J.         | 717 Encino Med. Pl. N.E.                      | Albuquerque, N.M.     | Helen            |                                       |
| Morgan, Clinton W., Jr.  | 828 Summit Ave., N.E.                         | Albuquerque, N.M.     | Barbara          | 107 St. Johns Rd.                     |
| Morley, Thos. P.         | 170 St. George St.                            | Toronto 5, Ont., Can. | Maude            | 37 Opeongo Rd.                        |
| Mosberg, Wm. H., Jr.     | 11 E. Chase St.                               | Baltimore 2, Md.      | Emelil           | 2757 Brookwood Dr.                    |
| Mount, Harry T. R.       | 276 Elgin St.                                 | Ottawa, Ont., Can.    | Marjorie         | 2302 Country Club Ave.                |
| Mudd, Robt. H.           | 1720 Spring Hill Ave. Bld. 3                  | Mobile, Ala.          | Anne             | 4422 N. Stowell Ave.                  |
| Muehlig, Wilbur A.       | 636 Med. Arts Bld.                            | Omaha 2, Neb.         | Mary Frances     | 300 Skyview Dr., W.                   |
| Mufson, Jos. A.          | 759 N. Milwaukee St.                          | Milwaukee 2, Wis.     | Mary             | 460 Sabine Ave., Wynnewood            |
| Munslow, Ralph A.        | 1233 Nix Prof. Bld.                           | San Antonio, Tex.     |                  |                                       |
| Murtagh, Frederick       | 3701 N. Borad St.                             | Philadelphia 40, Pa.  |                  |                                       |
| <b>N</b>                 |   |                       |                  |                                       |
| Nash, Tom M.             | 729 Med. Arts Bld.                            | Dallas 1, Tex.        | Gloria           | 1100 N. Canterbury Ct.                |
| Nashold, Blaine S.       | V.A. Hosp.                                    | Durham, N.C.          | Irene            | 814 Watts St.                         |
| *Neill, Robt. G.         | Deceased                                      | Orlando, Fla.         | Lois             | 312 Mary Jess Rd.                     |
| Nichols, Pomeroy         | 1467 Harper St.                               | Augusta, Ga.          | Alicia           | 3036 Bransford Rd.                    |
| Nielsen, Aage            | 10 Peterboro St.                              | Detroit, Mich.        |                  |                                       |
| Nilges, Richard G.       | 2717 Wabash Ave.                              | Gary, Ind.            | Jean E.          | 237 Glen Park Ave.                    |

## ALPHABETICAL ROSTER Continued

| Member's Name                                  | Office Address                      | City and State                                     | Wife's Name       | Home Address   |
|--|-------------------------------------|--|-------------------|--|
| Niochet, Arminio Martinez<br>Northrop, Paul E. | Centro Medico<br>2010 Wishire Blvd. | Caracas, Venezuela, S.A.<br>Los Angeles 57, Calif. | Leonor<br>Pauline | Ota Mersa Ave., Chile Caofas<br>1242 N. Crescent Hts. Blvd., Hollywood, Cal. |
| <b>O</b>                                       |                                     |  |                   |  |
| Oberhill, Harold R.                            | 250 E. Superior St.                 | Chicago 11, Ill.                                   | Beth              |  |
| O'Brien, Francis H.                            | 155 Grove St.                       | Waterbury, Conn.                                   | Mary Kathryn      |  |
| O'Connell, Frank B., Jr.                       | 120 W. Ravine St.                   | Kingsport, Tenn.                                   | Mildred (Millie)  | Southbury<br>1328 Belmeade Dr.   |
| Olive, J. Ignacio                              | Niza 46, M                          | Mexico D.F. 6, Mex.                                |                   |  |
| Olmedo, Livio                                  | Suite B-1, Prof. Bl.                |  |                   |  |
| Olsen, Axel K.                                 | Augustine Cut-Off                   | Wilmington, Del.                                   | Cecilia           | 1500 Bedford Rd., Deerhurst  |
| Olson, C. Kent                                 | 230 N. Broad St.                    | Phila. 2, Penna.                                   | Sadie             | 115 Linwood Ave., Ardmore  |
| Osher, Daniel                                  | 825 Nicollet Ave.                   | Minneapolis 2, Minn.                               |                   | 1208 Cedar Lake Rd.  |
|  | 315 Goodman St.                     | Cincinnati 19, Ohio                                | Muriel            | 4015 Rosehill Ave.   |
| <b>P</b>                                       |                                     |  |                   |  |
| Pace, John W.                                  | 2940 N. Fresno St.                  | Fresno 4, Calif.                                   | Catherine B.      | 516 W. Shaw  |
| Padberg, Frank                                 | 338 Waldon Bl.                      | Little Rock, Ark.                                  | Helen             | 205 Colonial Court   |
| Paget, John F.                                 | 144 Golden Hill St.                 | Bridgeport, Conn.                                  | Elizabeth         | Prospect Rd., Westport   |
| Palazzo, Frank A.                              | 4161 Lindell Blvd.                  | St. Louis, Mo.                                     | Adrienne          | 6903 Kingsbury Blvd.   |
| Parkinson, Dwight                              | 418 Med. Arts Bl.                   | Winnipeg 1, Man., Can.                             | Elizabeth         | 1055 Wellington Crescent   |
| Pava, Arthur A.                                | 26 Mulberry St.                     | Springfield, Mass.                                 | Helen             | 103 Bennington St.   |
| Perese, Dogan M.                               | 666 Elm St.                         | Buffalo 3, N.Y.                                    | Eris              | 90 Orchard Hill Dr., Orchard Park  |
| Perlmutter, Irwin                              | 401 Coral Way                       | Coral Gables, Fla.                                 | Corinne           | 5808 Michelangelo  |
| Pfeil, Edgar T., Jr.                           | 2021 N. Central Ave.                | Phoenix, Ariz.                                     |                   |  |
| Picaza, Jorge A.                               | Calle 1, No. 506                    | Havana   |                   |  |
|  | Entre 23 y 25                       | Vedado, Cuba                                       | Esther            |  |
| Pitts, Wm. Reid                                | 1012 Kings Dr.                      | Charlotte 7, N.C.                                  | Elizabeth         | 429 Eastover Rd.   |
| Polcyn, John L.                                | 141 College Ave.                    | Lancaster, Pa.                                     | Helen             | 1605 Wheatland Ave.  |
| Pollard, Claude, Jr.                           | 6410 Fannin St.                     | Houston 5, Tex.                                    | Eileen            | 3738 Drummond  |
| Polmeteer, Frank A.                            | 4835 Van Nuys Blvd.                 | Sherman Oaks, Calif.                               | Dorothy           |  |
| Price, Pliny A.                                | 683 E. Broad St.                    | Columbus 15, Ohio                                  | Margaret H.       | 3924 Mountview Rd.   |
| Price, Richard D.                              | 1233 Nix Prof. Bl.                  | San Antonio, Tex.                                  | Ann               | 430 Forrest Hill Dr.   |
| <b>R</b>                                       |                                     |  |                   |  |
| Rafes, Earl H.                                 | 675 5th St.                         | Beaumont, Tex.                                     | Charlotte         | 1035 20th St.  |
| Ralston, Brue L.                               | 1176 Fifth Ave.                     | N.Y. 29, N.Y.                                      | Shirley           | 63 Buena Vista Dr., Dobbs Ferry  |

ALPHABETICAL ROSTER Continued

| Member's Name          | Office Address                                   | City and State         | Wife's Name      | Home Address                                 |
|------------------------|--|------------------------|------------------|--|
| Raney, Aidan A.        | 2010 Wilshire Blvd.                              | Los Angeles 57, Calif. | Mary E.          | 125 N. Las Palmas                            |
| Ransohoff, Joseph      | 710 W. 168th St.                                 | N.Y. 32, N.Y.          | Elizabeth        |  |
| Raskind, Robt.         | 930 Madison Ave.                                 | Memphis, Tenn.         |                  |  |
| Reed, H. Lester        | 315 Fincastle Bl.                                | Louisville 2, Ky.      | Ethel            | 5912 El Campo Terrace                        |
| Rehfeldt, Frederick C. | 1001 Pa. Ave.                                    | Ft. Worth 4, Tex.      | Betsy            | 91 Forest Drive, Wethersfield                |
| Reilly, Francis G.     | 85 Jefferson St.                                 | Hartford 14, Conn.     | Betty            | 50 S. Parkview Ave.                          |
| Retter, Richard        | 350 E. Broad St.                                 | Columbus 15, Ohio      |                  |  |
| Rezende, Nilson        | c/o Mr. A. Coelbo                                |                        |                  |  |
| Rizzoli, Hugo V.       | 351 Central Ave.                                 | Hackensack, N.J.       | Helen            | 6100 Kennedy Dr., Kenwood, Chevy Ch. 15, Md. |
| Robertson, Jos. W.     | 1150 Conn. Ave., N.W.                            | Washington 6, D.C.     | Alice Jo (Jodie) | 3827 Ruskin                                  |
| Robinson, Franklin     | 437 Hermann Prof. Bl.                            | Houston, Tex.          | Gloria           | Rimmon Rd., Woodbridge                       |
| Rosen, Harold Jacob    | 114 Sherman Ave.                                 | New Haven, Conn.       | Joyce            | 38 Fifth St., St. John, N.B.                 |
| Roth, David B.         | St. John Gen. Hosp.                              | Canada                 | Katherine        | 3000 Fairway                                 |
| Russell, John R.       | 146 Wyoming St.                                  | Dayton 9, Ohio         | Jane             | 3865 Ruckle St.                              |
| Rutledge, Robt.        | 1100 W. Michigan St.                             | Indianapolis 7, Ind.   | Peggy            | 2624 Warwick Dr.                             |
|                        | 1200 N. Walker St.                               | Oklahoma City, Okla.   |                  |  |
|                        |  |                        |                  |  |
| Sachs, Ernest, Jr.     | Hitchcock Clinic                                 | Hanover, N.H.          | Jeanne           | Spencer Rd.                                  |
| Sayers, Martin Peter   | 1275 Olentangy River Rd.                         | Columbus 8, Ohio       | Marjorie         | 2860 Canterbury                              |
| Schaefer, Jaques P.    | 6944 Chippewa St.                                | St. Louis 9, Mo.       | Janet            | 26 Oakleigh Lane, St. Louis Co.              |
| Scheibert, Chas. D.    | Kennedy V.A. Hosp.                               | Memphis 15, Tenn.      | Jean             | 7750 Dogwood Rd., Germantown                 |
| Scheuerman, Walter G.  | 210 W. State St.                                 | Trenton, N.J.          | Rosemary         | Sutphin Rd., Yardley, Pa.                    |
| Schneider, Richard Coy | Dept. Neurosurg., 5159 o.p. Bl., 1313 E. Ann St. | Ann Arbor, Mich.       | Madeleine T.     | 1101 Pauline Blvd.                           |
| Schultz, Elmer C.      | 899 Madison Ave.                                 | Memphis, Tenn.         | Marjorie         | 176 N. Cherry Rd.                            |
| Schwab, John E.        | 409 Harvey Bl.                                   | W. Palm Beach, Fla.    | Maude S. (Sandy) | 246 Seville Rd.                              |
| Schweinfurth, Jas. P.  | 3244 E. Douglas                                  | Wichita, Kan.          | Marjorie         | 6021 E. 8th St.                              |
| Schwidde, Jess T.      | Suite 102, 1231 N. 29th St.                      | Billings, Montana      | Kate             | 3005 Placer Dr.                              |
| Scott, Thos. E. Jr.    | 135 Broadway                                     | Daytona Beach, Fla.    |                  |  |
| Sears, Robt. A.        | Bapt. Prof. Bl., 340 Blvd., N.E.                 | Atlanta, Ga.           | Joan             | 111 Peachtree St.                            |
| Secrest, Roy J.        | 1275 Olentangy Blvd.                             | Columbus, Ohio         | Helen            | 2430 Onandaga Dr.                            |
| Segerberg, Ludwig H.   | 405 Heyburn Bl.                                  | Louisville, Ky.        | Mildred          | Rio Vista Dr.                                |
| Seletz, Emil           | 405 N. Bedford Dr.                               | Beverly Hills, Cal.    | Sylvia           | 2515 N. Commonwealth Ave. Los Angeles, 27    |
| Silverstone, Bertram   | Pratt Diag. Clinic                               |                        | Betty            | 108 Wash. Ave., Cambridge                    |
|                        | Harriston and Bennett Sts.                       | Boston 11, Mass.       |                  |  |

## ALPHABETICAL ROSTER Continued

| Member's Name           | Office Address            | City and State          | Wife's Name      | Home Address                |
|-------------------------|---------------------------|-------------------------|------------------|-----------------------------|
| Sengstaken, Robt. W.    | 520 Franklin St.          | Garden City, N.Y.       | Geraldine N.     | The Rise, Woodbury          |
| Shafer, Wm. A.          | 609 Sassafras St.         | Erie, Pa.               | Kathryn B.       | 4706 Upland Dr.             |
| Sheldon, Keith W.       | 402 Burns Bl.             | Colorado Springs, Colo. | Gwenith          | 35 Lake, Broadmoor          |
| Shepard, John W.        | 1554 Northern Blvd.       | Manhasset, N.Y.         | Elizabeth        | 81 Rock Wood Rd.            |
| Siver, Bernard B.       | 336 W. Woodruff St.       | Toledo, Ohio            | Estelle          | 2472 Emmick Dr.             |
| Siefert, H. Jack        | 400 29th St.              | Oakland 9, Cal.         | Barbara          | 6140 Contra Costa Rd.       |
| Silver, Maurice         | 102 Waterman St.          | Providence 5, R.I.      | Alene F.         | 320 Slater Ave.             |
| Silvernail, Wm. J.      | USAF Hosp.                |                         |                  |                             |
| Simpson, Jas. R.        | 6407 APO, 323, S.F., Cal. | Tachikawa, Japan        | Joyce            | 8 Park Lane, Scotia, N.Y.   |
| Skultety, F. Miles      | 306 High St.              | Hamilton, Ohio          | Helen            | 1205 Briarwood Dr.          |
| Slade, Harry W.         | Univ. Hosps.              | Iowa City, Iowa         | Constance        | 1106 Yewell St.             |
| Slemmer, Robt. E.       | 2224 Wash. Ave.           | Waco, Tex.              | Betty            | 5025 Lockwood Dr.           |
| Slepian, Alexander      | 3 W. 4th St.              | Cincinnati 2, Ohio      | Margaret         | 16 Walsh Rd.                |
| Smiley, Gordon L.       | 959 Lafayette Ave.        | Niagara Falls, N.Y.     | Olive            | 959 Lafayette Ave.          |
| Smith, Geo. W.          | 1169 Eastern Parkway      | Louisville, Ky.         | Edith            | 530 Ridgewood Rd.           |
| Smith, W. Edson         | 303 So. Minn. Ave.        | Sioux Falls, Minn.      |                  |                             |
| Smolik, Edmund A.       | Blount Prof. Bl.          | Knoxville 20, Tenn.     | Jane             | 4053 Towanda Trail          |
| Somberg, Harold M.      | 100 N. Euclid             | St. Louis 8, Mo.        | Jane             | 59 Middlesex Dr.            |
| Speigel, I. Joshua      | 31 Lincoln Park           | Newark, N.J.            | Ethel            | 216 Village Rd., So. Orange |
| Spence, Wm. T.          | 55 E. Wash.               | Chicago 2, Ill.         | Rosalynde        | 6801 S. Bennett             |
| Stafford, Donald E.     | 1150 Conn. Ave., N.W.     | Wash. D.C.              | Frances          | 3715 Idaho Ave., N.W.       |
| Starr, Harry            | 902 Boren Ave.            | Seattle 4, Wash.        | Elizabeth        | 3164 W. Laurelhurst Dr.     |
| Steelman, Harry E.      | 675 Fifth St.             | Beaumont, Tex.          | Doris            | 805 Fifth St.               |
| Stoll, Julius, Jr.      | 550 W. Thomas Rd.         | Phoenix, Ariz.          | Laureen          | 324 E. Tuckey Lane          |
| Stowell, Averill        | 274 Benefit St.           | Providence 3, R.I.      | Ann              | 7 John St.                  |
| Strain, Richard E.      | 1151 S. Peoria            | Tulsa, Okla.            | Helen            | 2107 East 23rd              |
| Stratemeyer, Winslow P. | 401 Coral Way             | Coral Gables, Fla.      | Anne             | 4510 Santa Maria            |
| Strewler, Gordon J.     | 1501 Arizona              | El Paso, Tex.           | Eileen           | 515 Linda Lane              |
| Sturman, Robt. H.       | 412 Med. Arts Bl.         | Duluth 2, Minn.         | Effie            | 1812 Lakeview Dr.           |
| Suckle, Henry M.        | 155 Grove St.             | Waterbury, Conn.        | Gloria           | Len-Myr Rd., Woodbury       |
| Suechting, Ralph L.     | 110 E. Main St.           | Madison, Wis.           | Esther           | 742 Seneca Place            |
| Sullivan, Benjamin H.   | 116 S. Commercial St.     | Neehah, Wis.            | Dorothy          | 620 E. Forest Ave.          |
| Sullivan, E. J.         | 736 6th St. So.           | St. Petersburg, Fla.    | Elsie            | 2823 Ivanhoe Way, South     |
| Sutherland, Daniel L.   | 836 Miami Rd.             | Jacksonville 7, Fla.    | Mignonne (Midge) | 1656 Woodmere Dr.           |
|                         | 24 Queens Rd.             | St. Johns, Nfld., Can.  | Betty Ann        | Box 1171                    |

### ALPHABETICAL ROSTER Continued

| Member's Name  | Office Address  | City and State   | Wife's Name   | Home Address  |
|--|---|--|---|---|
| Svien, Hendrick J.<br>Sweeney, Donald B.   | 200 1st St., S.W.<br>2205 Highland Ave.   | Rochester, Minn.<br>Birmingham 5, Ala.   | Nancy<br>Kathryn  | 827 8th St., S.W.<br>3015 N. Woodridge Rd., Mt. Brook   |
| <b>T</b>   |   |  |   |   |
| Taheri, Z. E.<br>Taylor, Chas. W.<br>Thelen, Emil P.<br>Thompson, John M.<br>Thompson, Raymond K.<br>Tice, Wm. P.<br>Titrud, Leonard<br>Tolmach, Robt. S.<br>Tozer, Richard C.<br>Trowbridge, Wm. V.<br>Turpin, Wm. R. | 511 Center Ave.<br>410 Greyhound Bl.<br>USNH, St. Albans<br>1060 7th Ave., No.<br>11 E. Chase St.<br>920 So. Jefferson St.<br>929 Med. Arts Bld.<br>2227 Biscayne Blvd.<br>3617 W. 6th St.<br>11710 Shaker Blvd.<br>Box 82, 7100th USAF<br>Hosp., APO 633<br>22 N. Manassas | Bay City, Mich.<br>Calgary, Alberta, Can.<br>L.I., N.Y.<br>St. Petersburg, Fla.<br>Baltimore 2, Md.<br>Roanoke, Va.<br>Minneapolis 2, Minn.<br>Miami 37, Fla.<br>Topeka, Kan.<br>Cleveland, Ohio<br>N.Y., N.Y.<br>Memphis, Tenn. | Frances<br>Margaret<br>Irene<br>Dorothy<br><br>Dorothy (Dot)<br>Jeri A.<br>Nancy H.<br>Dorothy (Dotty)<br>Lois<br><br>Betsy<br>Myrtle | 2712 Westgate Ct.<br>4908 Britannia Dr.<br>1955 Blossom Way, So.<br><br>1305 Lakewood Dr., S.W.<br>Howard Point Rd., Rt. 1, Excelsior<br>1343 N.E. 104th St., Miami Shores<br>1447 Oakley<br>461 Kenwood Dr., Suite "R," Euclid 23<br><br>Same as husband<br>621 S. Willett |
| <b>V</b>   |   |  |   |   |
| Van Buren, John<br>van den Noort, Gordon<br><br>Van Horn, Philip R.<br>Van Landingham, John H.<br>Velasco-Suarez, Manuel M.<br>Ver Bruggen, Adrien<br>Voris, Harold C.   | Nat. Inst. of Neurol.<br>Dis. and Blindness<br>255 S. 17th St.<br><br>411 30th St.<br>303 N. Main St.<br>Tonala 15<br>2020 W. Chas'tn. Blvd.<br>30 No. Mich. Ave.   | Bethesda 14, Md.<br>Philadelphia 3, Pa.<br><br>Oakland 9, Cal.<br>Rockford, Ill.<br>Mexico F. D.F., Mex.<br>Las Vegas, Nev.<br>Chicago 2, Ill.   | Shirley<br><br>Isabel<br>Norma<br>Jean A.<br>Elvira<br><br>Ila K.   | 10223 Capitol View Ave, Silver Spring<br>300 Conshohocken State Rd.<br>Penn Valley, Narberth<br>93 Cambrian Ave., Piedmont<br>1725 Harlem<br>Goldsmith 233, Mexico 5, D.F.<br>165 Bartram, Riverside  |
| <b>W</b>   |   |  |   |   |
| Walker, Exum Beckwith<br>Walker, James C.<br>Wallman, Lester J.<br>Wallace, Wm. E.<br><br>Weadon, Preston S.   | 340 Blvd., N.E., No. 423<br>412 Beacon St.<br>Mary Fletcher Hosp.<br>3700th USAF Hosp.,<br>Box 1559<br>211 Bronson Med. Cen.  | Atlanta 12, Ga.<br>Boston 15, Mass.<br>Burlington, Vt.<br><br>Lackland AFB, Tex.<br>Kalamazoo, Mich.   | Frances R.<br>Mary<br>Elizabeth<br><br>Juanita<br>Betty   | 1819 Greystone Rd., N.W.<br>41 Marr Crest Dr., Milton<br>80 Colchester Ave.<br><br>928 Fairchild St., San Antonio<br>2255 Tipperary Rd.   |

### ALPHABETICAL ROSTER Continued

| Member's Name            | Office Address             | City and State       | Wife's Name  | Home Address                         |
|--------------------------|----------------------------|----------------------|--------------|--------------------------------------|
| Weaver, Edgar N.         | 317 Carlton Terrace Bl.    | Roanoke, Va.         | Evelyn       | 2611 Crystal Spring Ave.             |
| Webb, J. Hugh            | 206 Bell Bl.               | Toledo 2, Ohio       | Emma         | 2456 Barrington Dr.                  |
| Webster, John E.         | 801 Whitney Bl.            | Detroit, Mich.       | Marjorie     | 15439 Windmill Pointe, Grosse Pointe |
| Weiford, Edward C.       | 330 W. 47th St.            | Kansas City, Mo.     | Mary         | 2009 W. 68th St.                     |
| Weinberger, Laurence M.  | 900 2nd Nat. Bank Bl.      | Akron, Ohio          | Sylvia       |                                      |
| Westhaysen, Peter Vander | 6223 Hohman Ave.           | Hammond, Ind.        | Helen        | 127 Beverly Munster                  |
| Weyand, Robert D.        | 411 30th St.               | Oakland 9, Calif.    | Camille      | 6128 Rock Ridge Blvd., So.           |
| Wiley, J. LaRue          | 13 S. Goodman St.          | Rochester 7, N.Y.    | Ann          | 34 Hoover Rd.                        |
| Williams, Jas. R.        | Kennedy V.A. Hosp.         | Memphis 15, Tenn.    |              | 2059 College, S.E.                   |
| Williams, John R.        | 833 Lake Drive             | Grand Rapids, Mich.  | Jean         |                                      |
| Wilson, Archer A.        | Deceased                   |                      |              |                                      |
| Wilson, Charles          | Drs. Bl., 3707 Gaston Ave. | Dallas, Tex.         | Julie        |                                      |
| Winokur, Gerald L.       | Med. Arts Bl.,             |                      |              |                                      |
|                          | 8 Clifton Place            |                      |              |                                      |
| Witt, Jos. A.            | USN Hosp.                  | Jersey City 4, N.J.  | Marian       | 71 Woodland Rd., Maplewood           |
| Woods, Robt. P.          | 3617 W. 6th St.            | Chelsea 50, Mass.    | Eleanor B.   | Quarters "T," USN Hosp.              |
| Wrenn, Frank R.          | 123 Mallard St.            | Topeka, Kan.         | Dorothy      | 2042 Birchwood                       |
| Wright, Robt. B.         | 515 Pine                   | Greenville, S.C.     | Betty        | 114 Seminole                         |
| Wu, Wm. Q.               | 314 Drs. Bl.,              | Jamestown, N.Y.      | Margaret     | 7 Winchester Rd., Lakewood           |
|                          | 63rd and Holmes St.        | Kansas City, Mo.     | Cecile F.    | 4414 Homestead Dr., Prairie Village  |
| <b>Y</b>                 |                            |                      |              |                                      |
| Yuhl, Eric T.            | 1414 21st St.              | Santa Monica, Calif. | Kathleen     | 1486 Glendon Ave., L.A. 24           |
| <b>Z</b>                 |                            |                      |              |                                      |
| Zealear, David S.        | 2940 N. Fresno             | Fresno, Calif.       | Frances      | 5212 N. Van Ness Blvd.               |
| Zinker, Leonard L.       | 277 Alexander St.          | Rochester, N.Y.      | Dorothy Anne | 180 Fairhaven Rd.                    |
| Zoll, John G.            | 131 Linwood Ave.           | Buffalo 9, N.Y.      | Mary         | 273 Highland Ave.                    |



N.T. much present in repeating. The EEG  
is less than 1 month in vascular lesion.  
They have to wait longer than 1 month.  
Case of angina - spike focus

### Trauma

Changes in EEG. Head Trauma - slow  
waves - may be localized or diffuse.

post Traumatic sharp wave focus.  
Malico-legal - must have good record.  
Are changes related to the injury.  
of population & abnormalities

Differentiation between vascular & neoplasm

### Depth Electrode Technique

Warrin Hastings has this - Flynn

Focal seizures & scars. Then this technique  
may be indicated.

Electroencephalography - difficult. Particularly if  
N.D. does not do often. May not work if work  
under local or if general anesthesia may have  
suppression. Does not allow access to deeper  
structures. works well with superficial scars  
Deep scars are frequent in Temp. lobe epilepsy.  
and electroencephalography not may not pick up

Depth electrographic Technique - may  
record and stimulate. do give or discriminate.  
16 channel

Scalp recordings about 45 sec



40



Depth electrode

Slugg study - helps the surface  
Transmission - opens up the diffuse systems  
Stimulation via depth recording - reproduce  
the seizure

Microstimulation for area IV.

- (1) Spike in area
- (2) produce EEG seizure of 5 to 10 sec
- (3) Stimulation - reproduce seizure

NOT so much difference in gray &  
white matter as one would expect.

Medication: Better to be off medication  
spikes suppressed in 20% of seizure pts.  
but at danger of status de nat.

Antiepileptic Monitoring - Jorgensen T.  
decide if taking off pt. should be  
taken off medication. If EEG normal  
may gradually take off.

New seizure disorders