



2020 CNS Spine Complications Course

Spine Challenges and Complications:
Safely Descending the Steepest Slopes

February 7–9, 2020 | Hyatt Centric, Park City, Utah

Course Directors



Daniel J. Hoh

Adam S.
Kanter

Praveen V.
Mummaneni

Course Faculty



Erica F. Bisson

John R. Dimar

John Pollina

Daniel K.
Resnick

Michael Y.
Wang

Earn up to 16 AMA PRA Category 1 Credits™

CNS Member \$995 | Non-member \$1,495 | Fellow/NP/PA \$695

cns.org/scc



The popular CNS Spine Complications Course is back for its seventh year! This year's theme, *Spine Challenges and Complications: Safely Descending the Steepest Slopes*, provides the best possible learning environment to improve your surgical outcomes and help avoid complications.

We invite you to bring a complicated case of your own to engage in discussion with peers and expert faculty on management and preventative strategies.

If you haven't yet attended, we encourage you to join us for a collegial atmosphere and outstanding course content presented by stellar faculty. If you've attended in the past, come back for more exceptional learning, new cases on controversial topics, and updated content.

Course Directors

Daniel J. Hoh
Adam S. Kanter
Praveen V. Mummaneni

"One of the best spine courses I have attended that allows the spine surgeon to freely discuss management strategies for complications that arise from troublesome cases."

Course Learning Objectives

Upon completion of this activity, participants will be able to:

- Recognize factors that lead to complications and poor outcomes when treating spine disorders
- Discuss new and different strategies for how to best resolve spine surgery complications should they arise
- Discuss current research and developments in diagnostic techniques, methods of therapy, and treatment alternatives for the management of spine diseases

Register now at cns.org/scc

**Advance registration deadline:
January 17, 2020**

PROGRAM

Friday, February 7

6:00–7:45 am

Breakfast Session: Complications in Degenerative Thoracolumbar Spine Surgery

Moderators: John Pollina,
Daniel K. Resnick

NEW! 7:45–9:30 am

To Fuse or Not to Fuse—If I Could Do It Again

Moderators: John R. Dimar,
Praveen V. Mummaneni

9:30–11:15 am

Unique Challenges and Complication Management in MIS Surgery

Moderator: Adam S. Kanter

11:15 am–12:00 pm

Attendee Case Presentations

Moderators: Erica F. Bisson,
Daniel J. Hoh

12:00–5:00 pm

Open Afternoon

5:00–6:30 pm

Sponsored Sessions
(Non-CME)

7:00–7:30 pm

Opening Reception

PROGRAM (continued)

Saturday, February 8

6:00–7:45 am

Breakfast Session: Complications of Degenerative Cervical Spine Surgery

Moderators: John Pollina, Daniel K. Resnick

NEW! 7:45–9:30 am

How to Treat Deformity Without Creating a Deformity

Moderators: John R. Dimar, Michael Y. Wang

NEW! 9:30–10:15 am

Geriatric Spinal Surgery Challenges

Moderator: John R. Dimar

10:15–11:00 am

Attendee Case Presentations

Moderators: Erica F. Bisson, Daniel J. Hoh

NEW! 11:00 am–12:00 pm

Medical Malpractice and Credentialing Round Table Discussion

Moderators: Erica F. Bisson, Daniel J. Hoh, Adam S. Kanter, Praveen V. Mummaneni

After 12:00 pm
Open Afternoon

Sunday, February 9

6:00–7:45 am

Breakfast Session: Spinal Trauma, Tumor, and Infection Challenges

Moderators: John R. Dimar, Daniel K. Resnick

7:45–9:30 am

When Implants Go Awry ...

Moderators: Adam S. Kanter, John Pollina, Michael Y. Wang

7:45–9:30 am

**Optional Breakout Session—
Oral Board Prep Cases
(Degenerative, Tumor, Trauma,
Infection, Deformity)**

Faculty: Erica F. Bisson, Daniel J. Hoh

9:30–10:00 am

Closing Remarks

Speakers: Daniel J. Hoh, Adam S. Kanter, Praveen V. Mummaneni

Agenda and faculty subject to change



Park City, Utah

With rustic mountain town charm, Park City is your destination for the “greatest snow on earth.”

Ski Equipment

The Hyatt Centric Park City has ski and snowboard rentals available onsite.

Ski Information

You may purchase your lift passes in advance through **parkcitymountain.com** and your lift tickets will be emailed to you. It is recommended to purchase more than seven days in advance for the best discount. Or, buy tickets onsite in Park City at the center of the village—a two-minute walk or a quick shuttle ride from the Hyatt Centric.

Ski Lift Ticket Rates*

Days	Adult (13–64)	Child (5–12)
1 Day	\$148	\$ 95
2 of 3 days	\$292	\$186
3 of 4 days	\$432	\$276

*Rates subject to change

Any questions? Please call the hotel front desk at 435.940.1234.



CNS

Congress of Neurological Surgeons
10 N. Martingale Road, Suite 190
Schaumburg, Illinois 60173

The 2020 CNS Spine Complications Course offers:

- Sessions with case presentations covering surgical indications, management, and complication avoidance for degenerative disease, tumor, deformity, MIS, and trauma
- New and challenging cases on controversial topics
- A morbidity and mortality conference review for surgeons in practice who do not have easy access to periodic M & M conferences



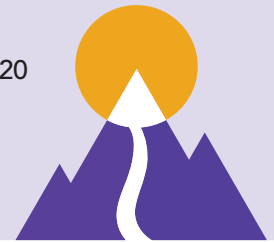
The AAA Four Diamond Hyatt Centric Park City sits at the base of the largest ski resort in the US and is your home for an incredible weekend experience!

Earn up to 16 AMA PRA Category 1 Credits™

Register today at cns.org/scc to reserve your housing

CNS members save \$500

Advance registration deadline: January 17, 2020



"Great experience for spine surgery specialists as well as orthopedic surgeons and neurosurgeons."